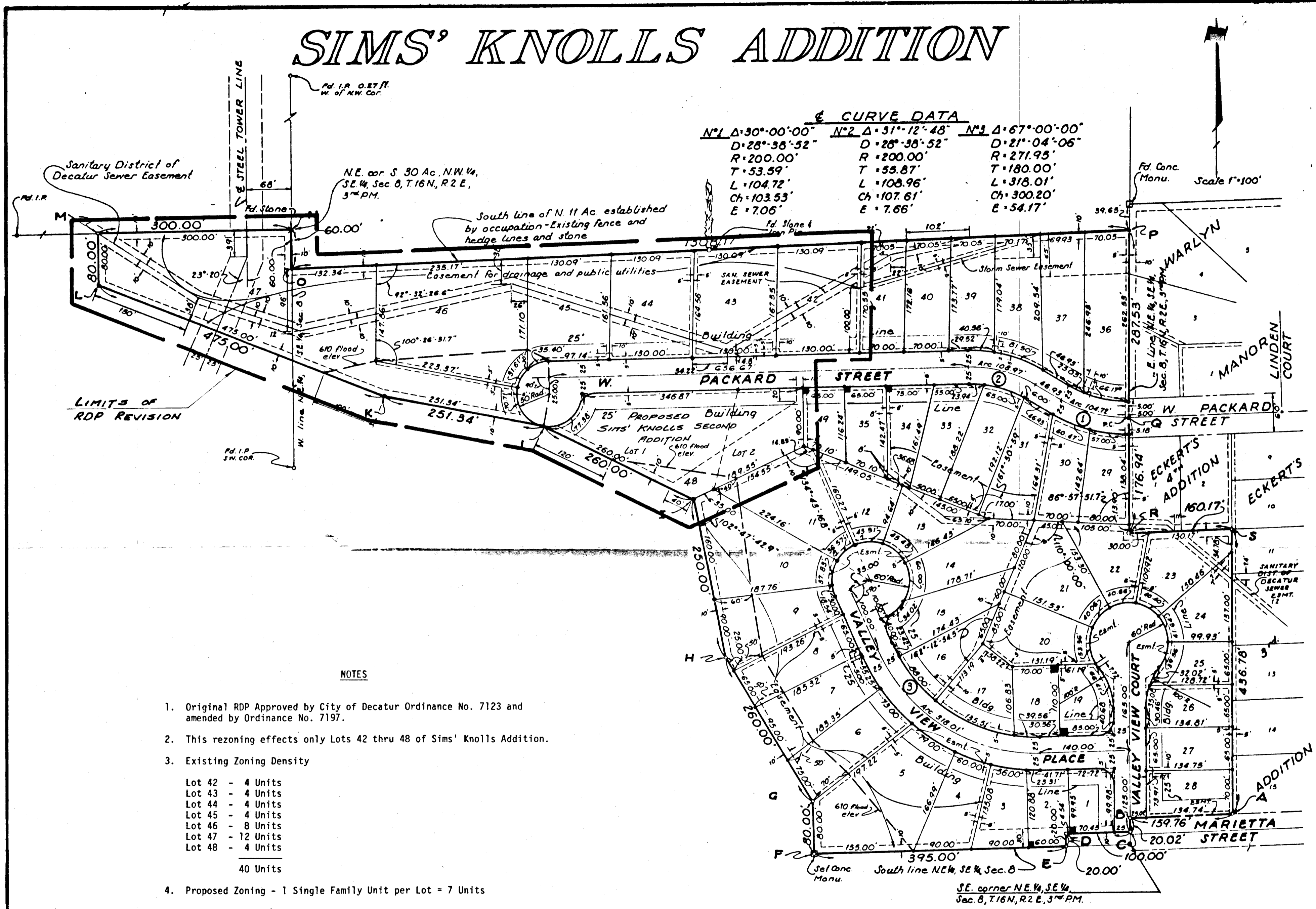


SIMS' KNOLLS ADDITION



CURVE DATA

N ¹ Δ 30° 00' 00"	N ² Δ 31° 12' 48"	N ³ Δ 67° 00' 00"
D = 28° 38' 52"	D = 28° 38' 52"	D = 21° 04' 06"
R = 200.00'	R = 200.00'	R = 271.95'
T = 53.59'	T = 55.87'	T = 180.00'
L = 104.72'	L = 108.96'	L = 318.01'
Ch = 103.53'	Ch = 107.61'	Ch = 300.20'
E = 7.06'	E = 7.66'	E = 54.17'

NOTES

- Original RDP Approved by City of Decatur Ordinance No. 7123 and amended by Ordinance No. 7197.
- This rezoning effects only Lots 42 thru 48 of Sims' Knolls Addition.
- Existing Zoning Density

Lot 42 - 4 Units
Lot 43 - 4 Units
Lot 44 - 4 Units
Lot 45 - 4 Units
Lot 46 - 8 Units
Lot 47 - 12 Units
Lot 48 - 4 Units
40 Units
- Proposed Zoning - 1 Single Family Unit per Lot = 7 Units

EXHIBIT A

REVISED RDP
SIMS DEVELOPMENT CO.
DECATUR, ILLINOIS

PUK planning & urban consulting engineer & architect, llc

DATE	NO.	BY	REVISION	PROJECT NO.