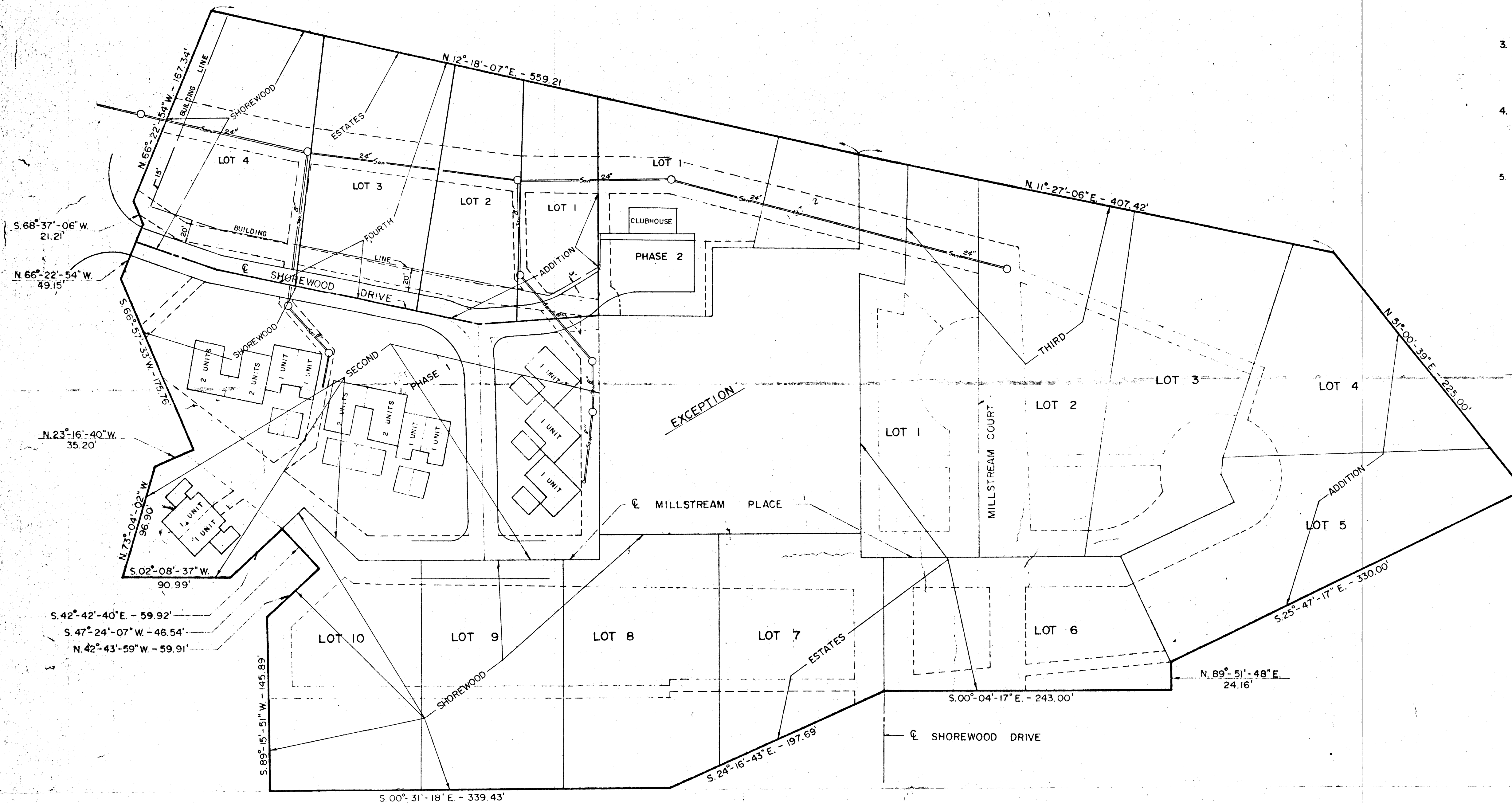


SHOREWOOD ESTATES RDP - PHASE I

NOTES

1. ORIGINAL RDP - PHASE I
39 DETACHED SINGLE FAMILY UNITS, LOTS 1 - 39
SHOREWOOD ESTATES 1st. ADDITION.
2. 1st. REVISION OF RDP - PHASE I
LOTS 1-13 AND COMMON AREA REVISED TO ALLOW 34
CONDOMINIUM UNITS ON SAID LOTS SHOREWOOD ESTATES
2nd. ADDITION.
3. 2nd. REVISION OF RDP - PHASE I
AFFECTED ONLY SHOREWOOD ESTATES 2nd. ADDITION
REVISED NUMBER OF UNITS FROM 1st. REVISION OF 34
CONDOMINIUM UNITS TO 23 CONDOMINIUM UNITS.
4. 3th. REVISION OF RDP - PHASE I
EFFECTS LOTS 14 THRU 39 OF SHOREWOOD ESTATES 1st.
ADDITION, REDUCES FROM 26 DETACHED SINGLE FAMILY UNITS
TO 10 DETACHED SINGLE FAMILY UNITS.
5. 4th. REVISION OF RDP - PHASE I
 1. EFFECTS A PART OF LOT 1 OF SHOREWOOD ESTATES 2nd ADDITION.
REVISION PROPOSES THE REDUCTION OF THE EXISTING DENSITY
OF 23 UNITS (AS PER THE 2nd REVISION), TO 21 UNITS. SPECIFICALLY
REDUCES THE APPROVED SIX UNITS ON THE WEST SIDE OF SHOREWOOD
DRIVE TO FOUR UNITS, ONE UNIT PER LOT.
 2. PROPOSED UNITS TO BE LIMITED TO ONE STORY STRUCTURES.
NO FLAT ROOF DESIGN WILL BE ALLOWED.



----- INDICATES INGRESS - EGRESS
AND UTILITY EASEMENTS
UNLESS OTHERWISE NOTED

SHOREWOOD ESTATES 1st. ADDITION = ENTIRE AREA
SHOREWOOD ESTATES 2nd. ADDITION = AS SHOWN
SHOREWOOD ESTATES 3rd. ADDITION = AS SHOWN

Ord. 89-33
4-17-89

EXHIBIT A

REVISED RESIDENCE DEVELOPMENT PLAN			
SHOREWOOD ESTATES DECATUR, ILLINOIS			
PKC philip w. cochran • consulting engineer • decatur, illinois			
DRAWN BY J.R.S	REVISIONS		PROJECT NO.
DATE 6-3-87	NO. DATE BY DESCRIPTION	8707	
CHECKED BY	1 8-13-87 SPM Rev. EASEMENTS LOTS 5-8-7-10	FILE NO. FIELD BK. NO.	
DATE	2 3-15-89 TWS SHOREWOOD ESTATES PHASE I ADDITION	34-48-59	
APP'D. BY		SHEET NO.	
DATE			