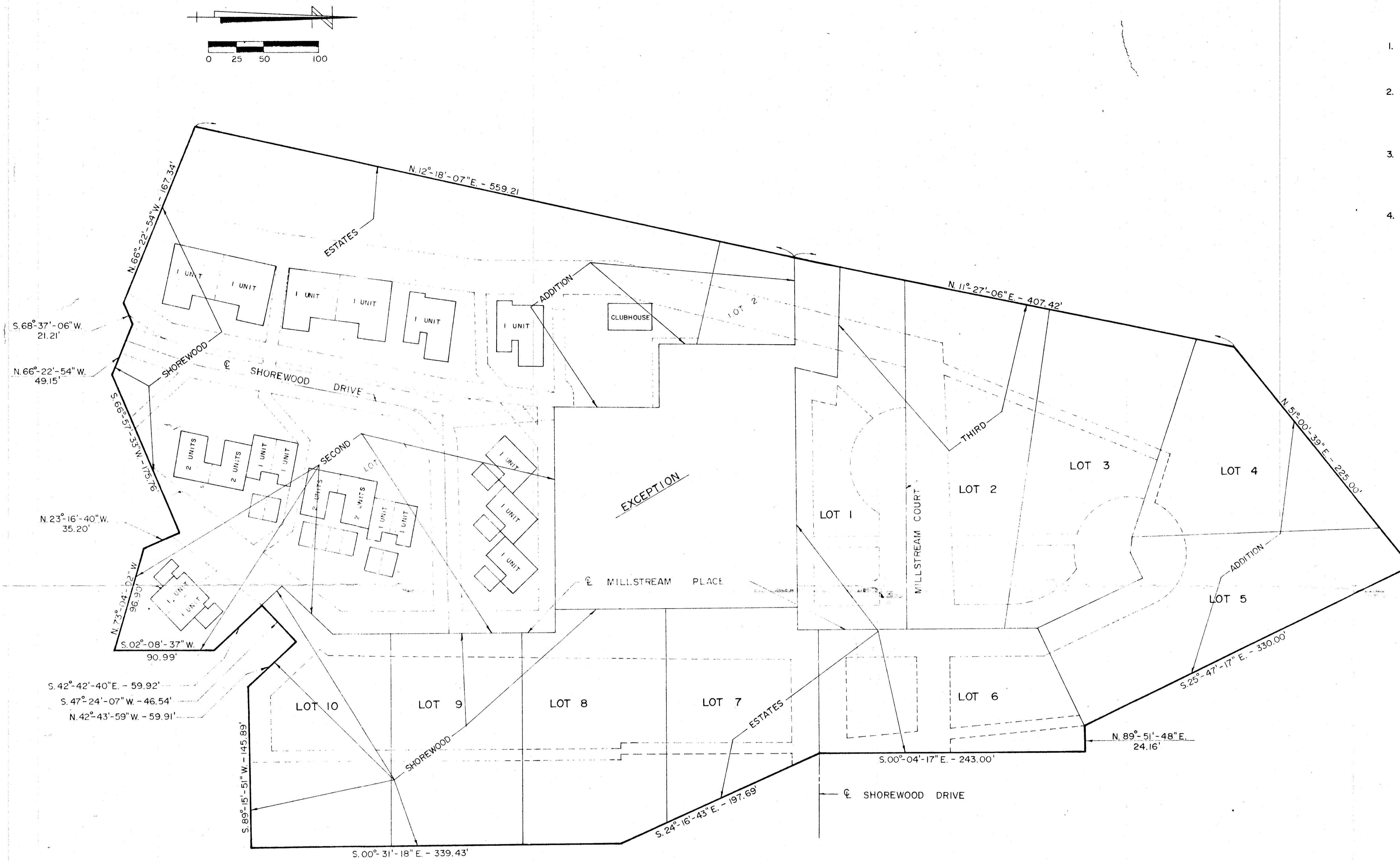


SHOREWOOD ESTATES RDP - PHASE I

87-113

NOTES

1. ORIGINAL RDP - PHASE I
39 DETACHED SINGLE FAMILY UNITS, LOTS 1 - 39
SHOREWOOD ESTATES 1st. ADDITION.
2. 1st. REVISION OF RDP - PHASE I
LOTS 1-13 AND COMMON AREA REVISED TO ALLOW 34
CONDOMINIUM UNITS ON SAID LOTS SHOREWOOD ESTATES
2nd. ADDITION.
3. 2nd. REVISION OF RDP - PHASE I
AFFECTED ONLY SHOREWOOD ESTATES 2nd. ADDITION
REVISED NUMBER OF UNITS FROM 1st. REVISION OF 34
CONDOMINIUM UNITS TO 23 CONDOMINIUM UNITS.
4. 3th. REVISION OF RDP - PHASE I (PROPOSED) JUNE 3, 1987
EFFECTS LOTS 14 THRU 39 OF SHOREWOOD ESTATES 1st.
ADDITION, REDUCES FROM 26 DETACHED SINGLE FAMILY UNITS
TO 10 DETACHED SINGLE FAMILY UNITS. (PROPOSED
SHOREWOOD ESTATES 3rd. ADDITION).



----- INDICATES INGRESS - EGRESS
AND UTILITY EASEMENTS
UNLESS OTHERWISE NOTED

SHOREWOOD ESTATES 1st. ADDITION = ENTIRE AREA
SHOREWOOD ESTATES 2nd. ADDITION = AS SHOWN
SHOREWOOD ESTATES 3rd. ADDITION = AS SHOWN

EXHIBIT A

REVISED RESIDENCE DEVELOPMENT PLAN			
SHOREWOOD ESTATES DECATUR, ILLINOIS			
PLC phillip w. cochran • consulting engineer • decatur, illinois			
DRAWN BY J.R.S. DATE 6-3-87	REVISIONS		PROJECT NO. 8707
CHECKED BY	NO.	DATE	DESCRIPTION
DATE	1	8-15-87	5:PM Rev. EASEMENTS LOTS 5-8-7-10
APP'D. BY			FILE NO./FIELD BK. NO. 34-48-59
DATE			SHEET NO.