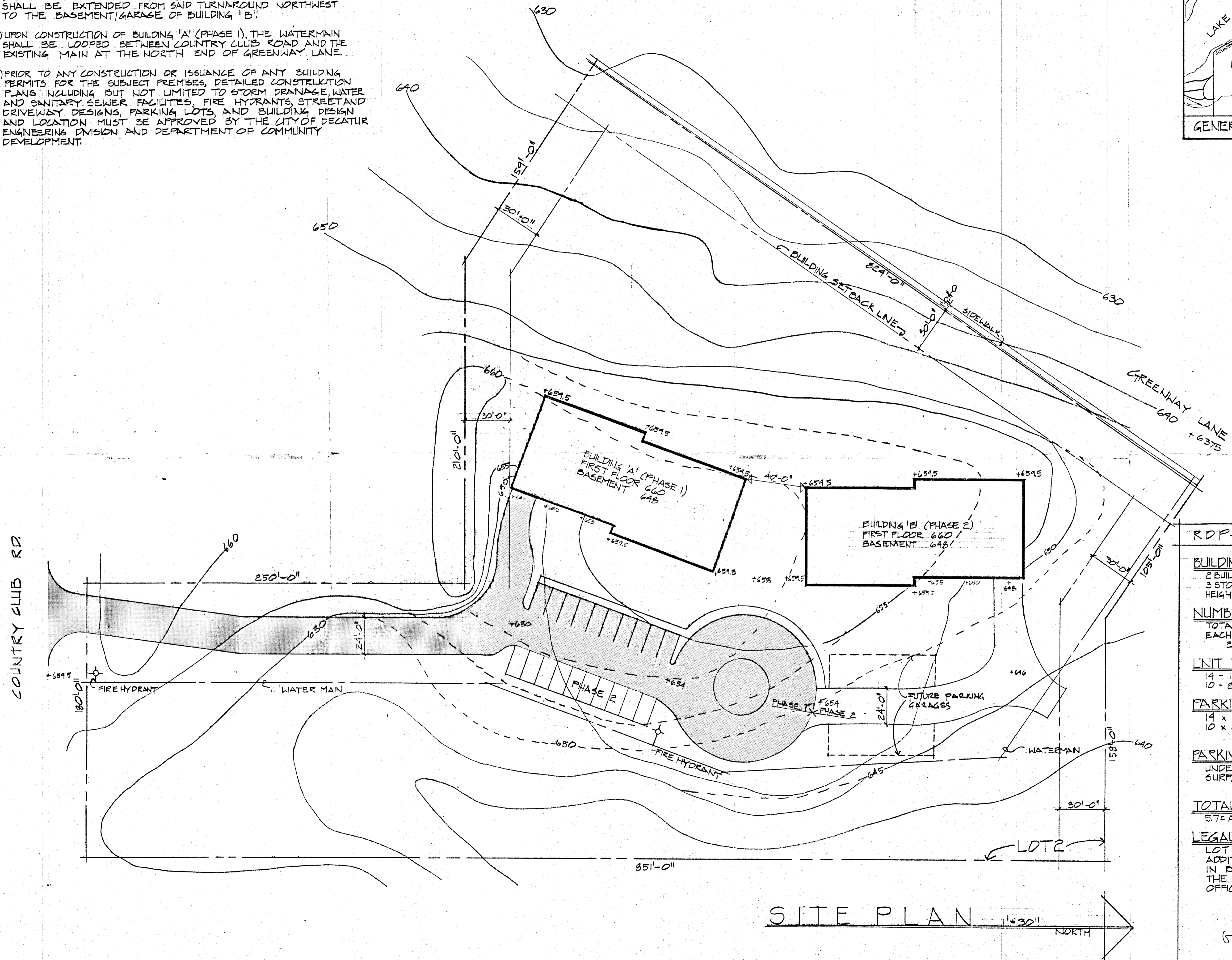
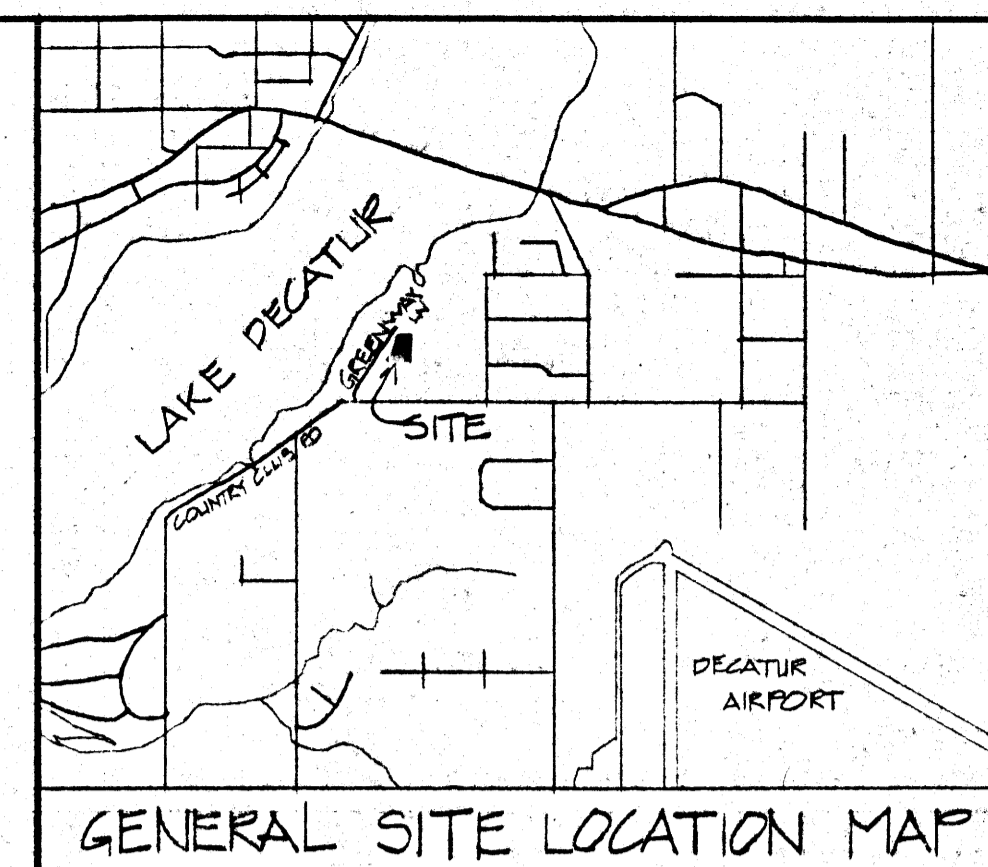


GENERAL NOTES:

- 1) IN CONJUNCTION WITH CONSTRUCTION OF BUILDING "A" (PHASE 1) VEHICULAR ACCESS SHALL BE CONSTRUCTED FROM COUNTRY CLUB ROAD AND TERMINATE WITH A TURNAROUND NORTH OF THE PARKING LOT FOR SAID BUILDING. UPON CONSTRUCTION OF BUILDING "B" (PHASE 2), VEHICULAR ACCESS SHALL BE EXTENDED FROM SAID TURNAROUND NORTHWEST TO THE BASEMENT/GARAGE OF BUILDING "B".
- 2) UPON CONSTRUCTION OF BUILDING "A" (PHASE 1), THE WATERMAIN SHALL BE LOOPED BETWEEN COUNTRY CLUBS ROAD AND THE EXISTING MAIN AT THE NORTH END OF GREENWAY LANE.
- 3) PRIOR TO ANY CONSTRUCTION OR ISSUANCE OF ANY BUILDING PERMITS FOR THE SUBJECT PREMISES, DETAILED CONSTRUCTION PLANS INCLUDING BUT NOT LIMITED TO STORM DRAINAGE, WATER AND SANITARY SEWER FACILITIES, FIRE HYDRANTS, STREET AND DRIVEWAY DESIGNS, PARKING LOTS, AND BUILDING DESIGN AND LOCATION MUST BE APPROVED BY THE CITY OF DELATUR ENGINEERING DIVISION AND DEPARTMENT OF COMMUNITY DEVELOPMENT.



RDP-R-2 REVISIONS=15NOV1984
GDEC1984

BUILDING
2 BUILDINGS
3 STORIES + BASEMENT/GARAGE
HEIGHT = MAX. 35'

NUMBER OF UNITS
TOTAL = 24 UNITS
EACH BUILDING
12 UNITS

UNIT TYPE
14 - 1 BEDROOM + DEN
10 - 2 BEDROOM + DEN

PARKING REQUIREMENTS
14 x 1.5 (SPACES/UNIT) = 21
10 x 2.0 (SPACES/UNIT) = 20
TOTAL REQUIRED = 41

PARKING SHOWN
UNDERGROUND PARKING = 36
SURFACE PARKING = 20
56

TOTAL SITE ACREAGE
5.7± ACRES LESS PRIVATE DRIVE, 3A = 5.2A.

LEGAL DESCRIPTION:
LOT TWO (2) OF SPRINGHILL THIRD ADDITION, AS PER PLAT RECORDED IN BOOK 1332 ON PAGE 58 OF THE RECORDS IN THE RECORDER'S OFFICE OF MACON COUNTY, ILLINOIS.

SITE PLAN 1"=30' NORTH

Grd. 84-90

EXHIBIT A

SALOGGA · BRADLEY · LIKINS · DILLOW
architects · engineers · planners
members of the american institute of architects
decatur, illinois

dated 15 NOV 84
revised
drawn by
checked by

SPRINGHILL
ADDITION

job number
sheet
of
sheets