

BENCH MARK
1" 2" W. OF S.E. CORNER, CONCRETE
FND FRONT OF PINK LADY LAUNDRY
ELEVATION = 691.88

PARKING
1 SPACE FOR EACH 2 UNITS
120 UNITS ÷ 2 = 60 SPACES

ADDITIONAL PARKING FOR
EMPLOYEES & GUESTS = 10 SPACES
TOTAL = 60 SPACES

ZONING - R-6 (EXCEPT BARBER SHOP PROPERTY)

LEGEND

200	EXIST. CONTOUR ELEVATION
200	NEW CONTOUR ELEVATION
x 200	EXIST. SPOT ELEVATION
x 200	NEW SPOT ELEVATION
○	EXIST. TREE TO REMAIN
●	NEW POLE LIGHT
○ CB	CATCH BASIN

SALOGGA • BRADLEY • LIKINS • DILLOW
architects • engineers • planners
members of the american institute of architects

decaturn, illinois

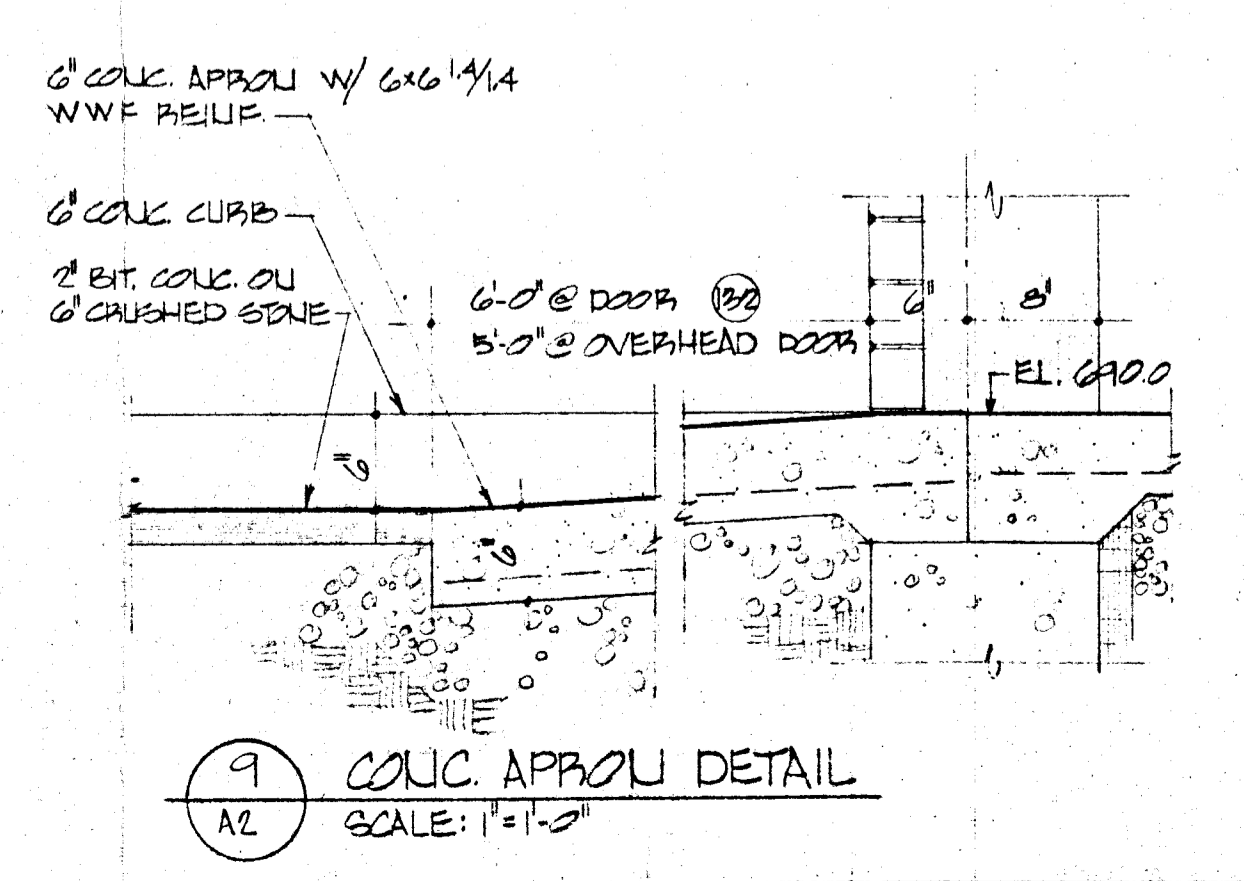
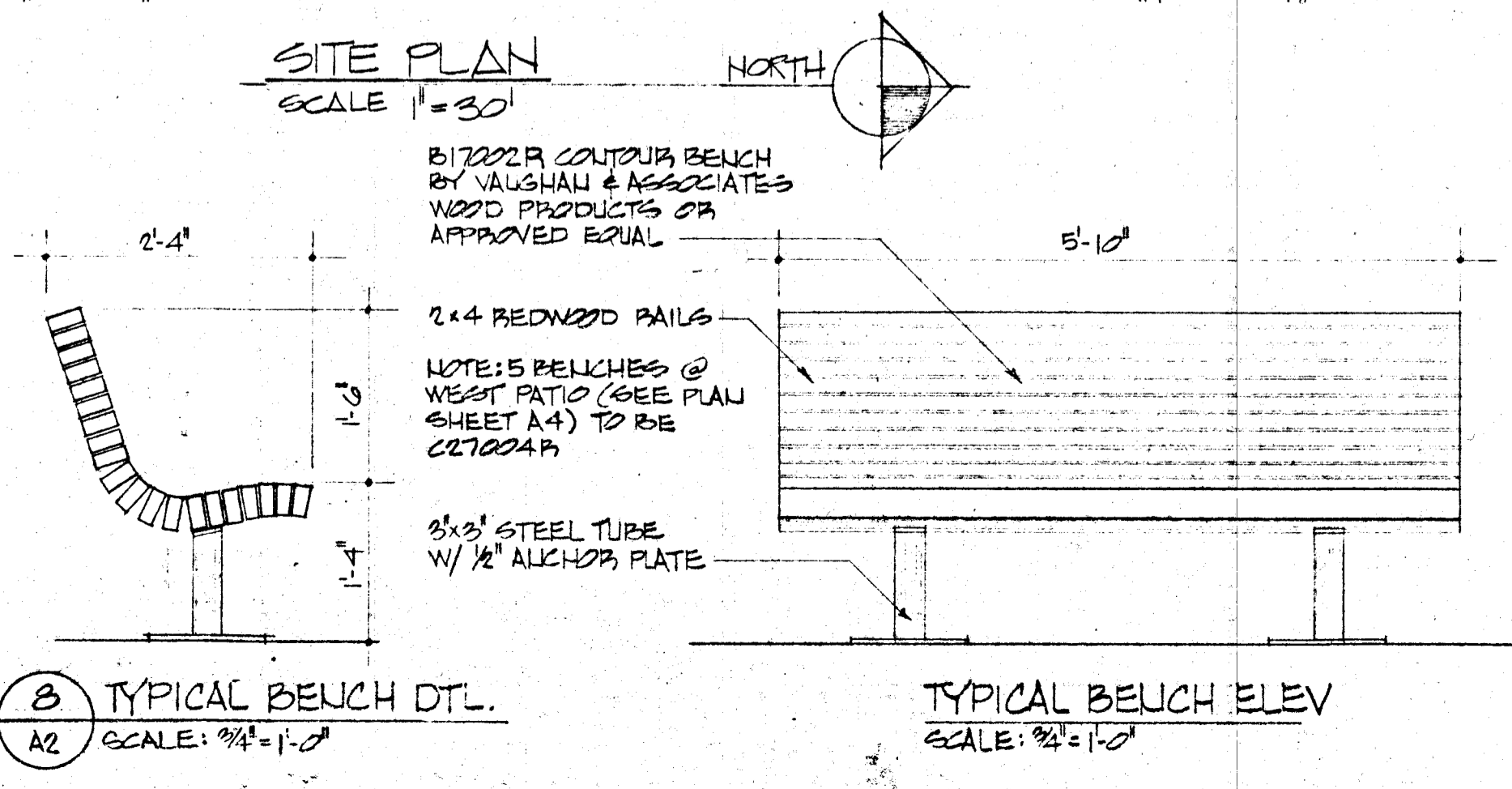
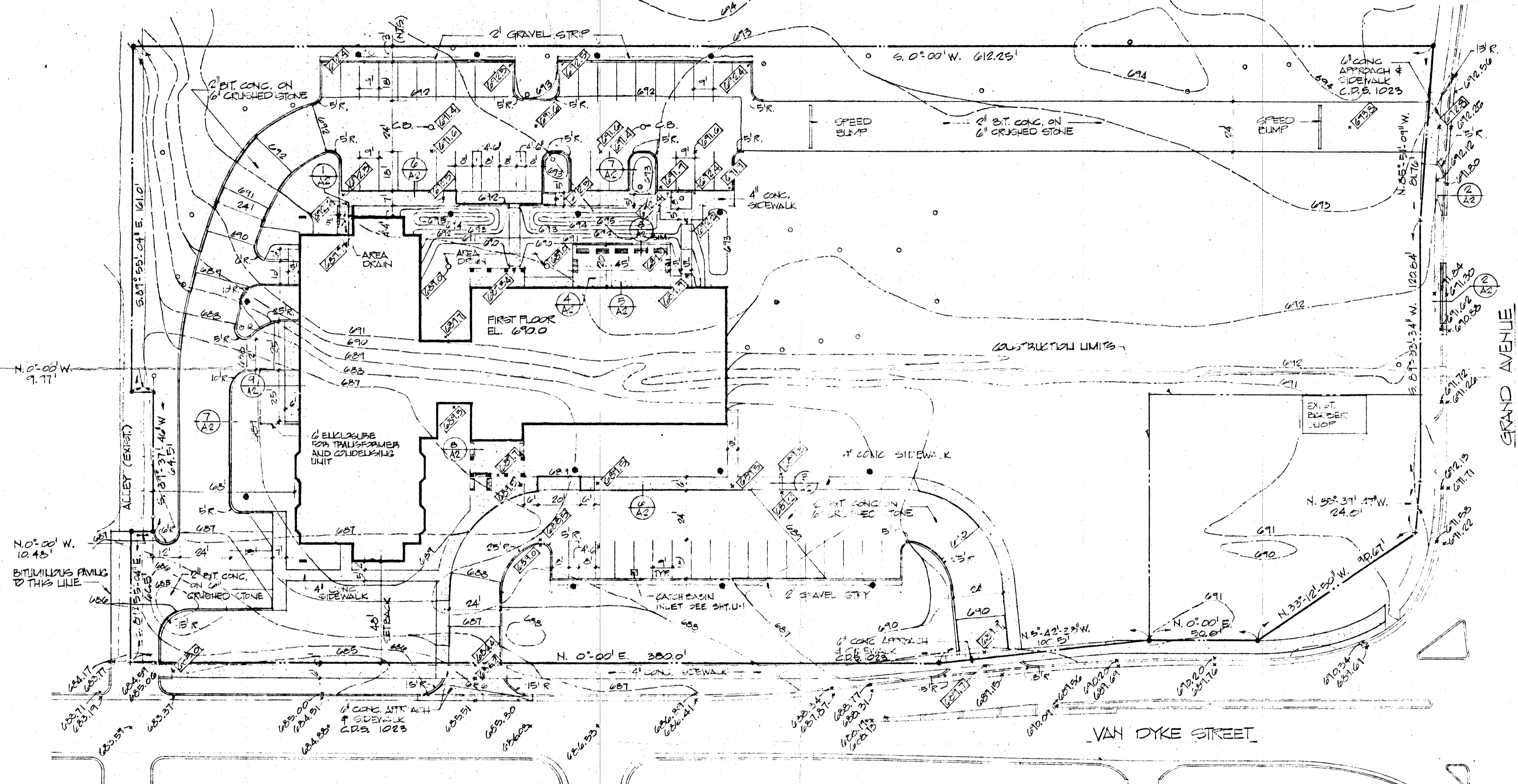
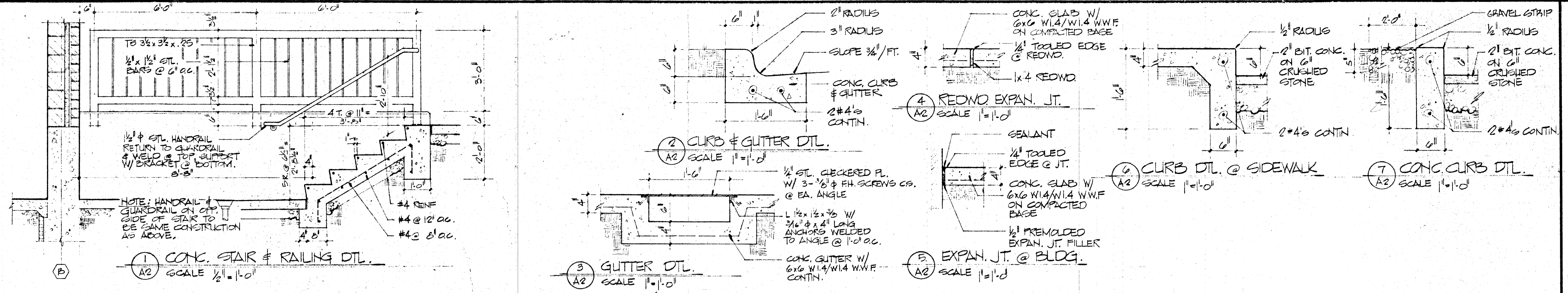
dated 15 JULY 1980
revised 5 AUG 1982

drawn by
checked by

HOUSING FOR THE ELDERLY
DECATUR HOUSING AUTHORITY
PROJECT ILLINOIS 12-B
ILLINOIS
DECATUR

job number

sheet **A2**
of **25**
sheets



BENCH MARK
 1" @ 1" W. OF S.E. CORNER CONCRETE PAD FRONT OF PINK LAUNDRY ELEVATION = 691.85

PARKING
 1 SPACE FOR EACH 2 UNITS
 40 UNITS ÷ 2 = 20 SPACES
 ADDITIONAL PARKING FOR EMPLOYEES & GUESTS = 10 SPACES
 TOTAL = 30 SPACES
 ZONING - R-6 (EXCEPT BARBER SHOP PROPERTY)

LEGEND

- EXIST. CONTOUR ELEVATION
- NEW CONTOUR ELEVATION
- EXIST. SPOT ELEVATION
- NEW SPOT ELEVATION
- EXIST. TREE TO REMAIN
- NEW POLE LIGHT
- CATCH BASIN

SALOGGA • BRADLEY • LIKINS • DILLOW
 architects • engineers • planners
 decatur, illinois
 members of the american institute of architects

dated 15 JULY 1960
 revised 5 AUG 1962
 drawn by
 checked by

HOUSING FOR THE ELDERLY
 DECATUR HOUSING AUTHORITY
 PROJECT ILLINOIS 12-B
 ILLINOIS
 DECATUR

job number
 sheet
A2
 of
25
 sheets