

OFF-STREET PARKING REQUIREMENTS

OFFICE: 3 SPACES PLUS 1 FOR EACH 400 #'
 OVER 1000 #'
 $(82.0' \times 35.0') + (40.0' \times 35.0') = 4270 - 1000 = 3270 \#'$
 $3270 / 400 = 8.175 \approx 8 + 3 = 11$

OFFICE: 11 SPACES REQ.

MANUFACTURING: 2 EMPLOYEES PER SPACE PER SHIFT.
 9 EMPLOYEES (MAX PER SHIFT) $9/2 = 4.5$
 MANUFACTURING: 5 SPACES REQ.

LOADING SPACE: 1 PER 10,000 #'
 1 LOADING SPACE REQUIRED

PARKING REQUIRED - 16 SPACES
 PARKING PROVIDED - 30 SPACES

LEGAL DESCRIPTION:
 LOTS 9, 10, 11, 12, 13, 14 THIRD ROLLING MILL ADDITION TO THE CITY OF DECATUR, AS PER PLAT RECORDED IN BOOK 50 PAGE 380 OF THE RECORDS IN THE RECORDER'S OFFICE OF MACON COUNTY, ILLINOIS.

PROPOSED RELOCATION OF SIDEWALK CURB AND GUTTER ALONG JASPER STREET. (NOT PART OF THIS CONTRACT)

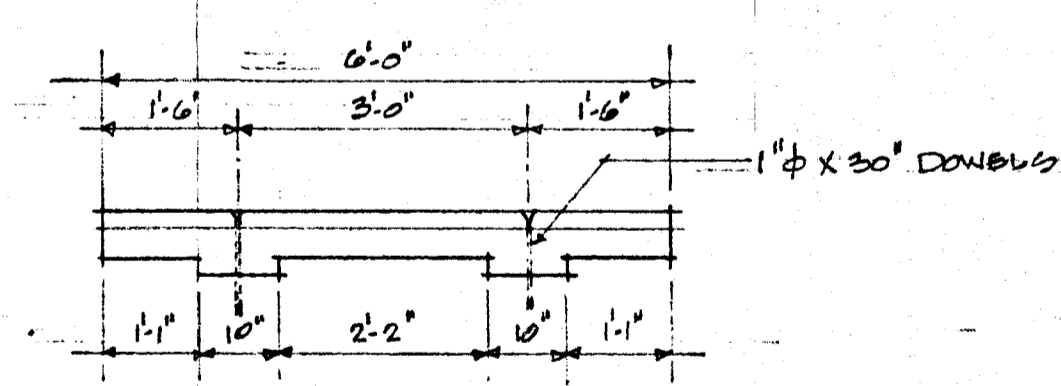
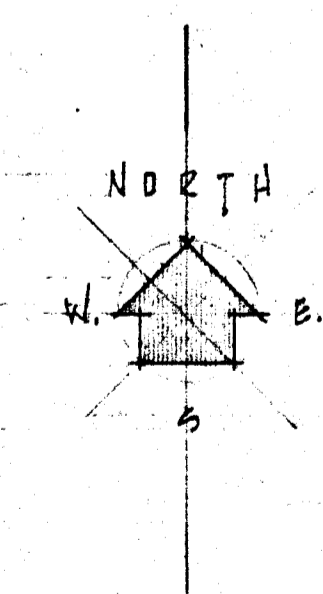
4" WIDE STRIPE DIVIDER, PAINTED WITH YELLOW TRAFFIC PAINT.

BENCH MARK
 M.H. RIM 660.00' AT CENTER OF NORTH AND WITT STREETS.

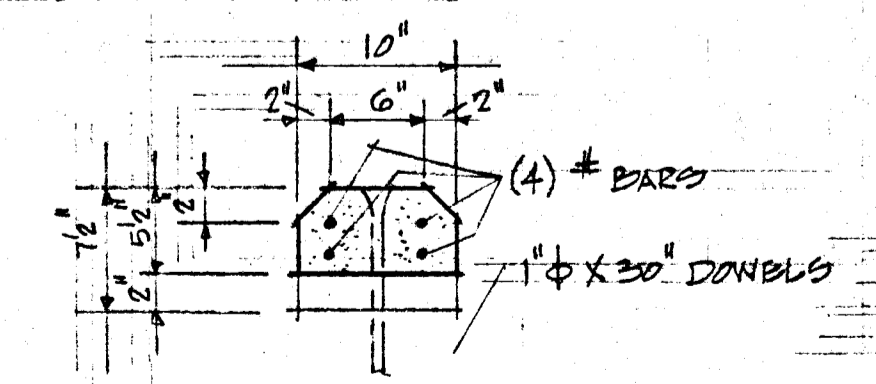
• SITE PLAN • SCALE: 1" = 30'-0"

- EXISTING GRADES
- PROPOSED GRADES
- INDICATES AREA TO RECEIVE NEW BITUMINOUS PAVEMENT.

NOTE:
 ENTIRE AREA ZONED M-3 (LIMITED INDUSTRIAL)



TYPICAL CONCRETE WHEEL
 SCALE: 1/2" = 1'-0"



SECTION AT WHEELGUARDS
 SCALE: 1" = 1'-0"

SITE PLAN DECATUR CUSTOM TOOLING, DECATUR, ILLINOIS	
DeWITT-AMDAL & ASSOCIATES ARCHITECTS	
263 SOUTH PARK	DECATUR, ILLINOIS
DRAWN BY <i>EDH</i>	DRAWING NO.
DATE MAY 2, 1980	
FILE NO. 1379	