

Exhibit A

**SPRINGHILL ADDITION  
RESIDENCE DEVELOPMENT PLAN**

ORIGINAL PLAN APPROVED BY ORD. # 4816-1967  
REVISED PLAN APPROVED BY ORD. # 5084-1968

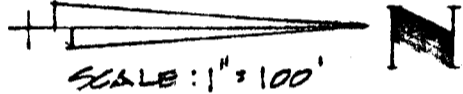
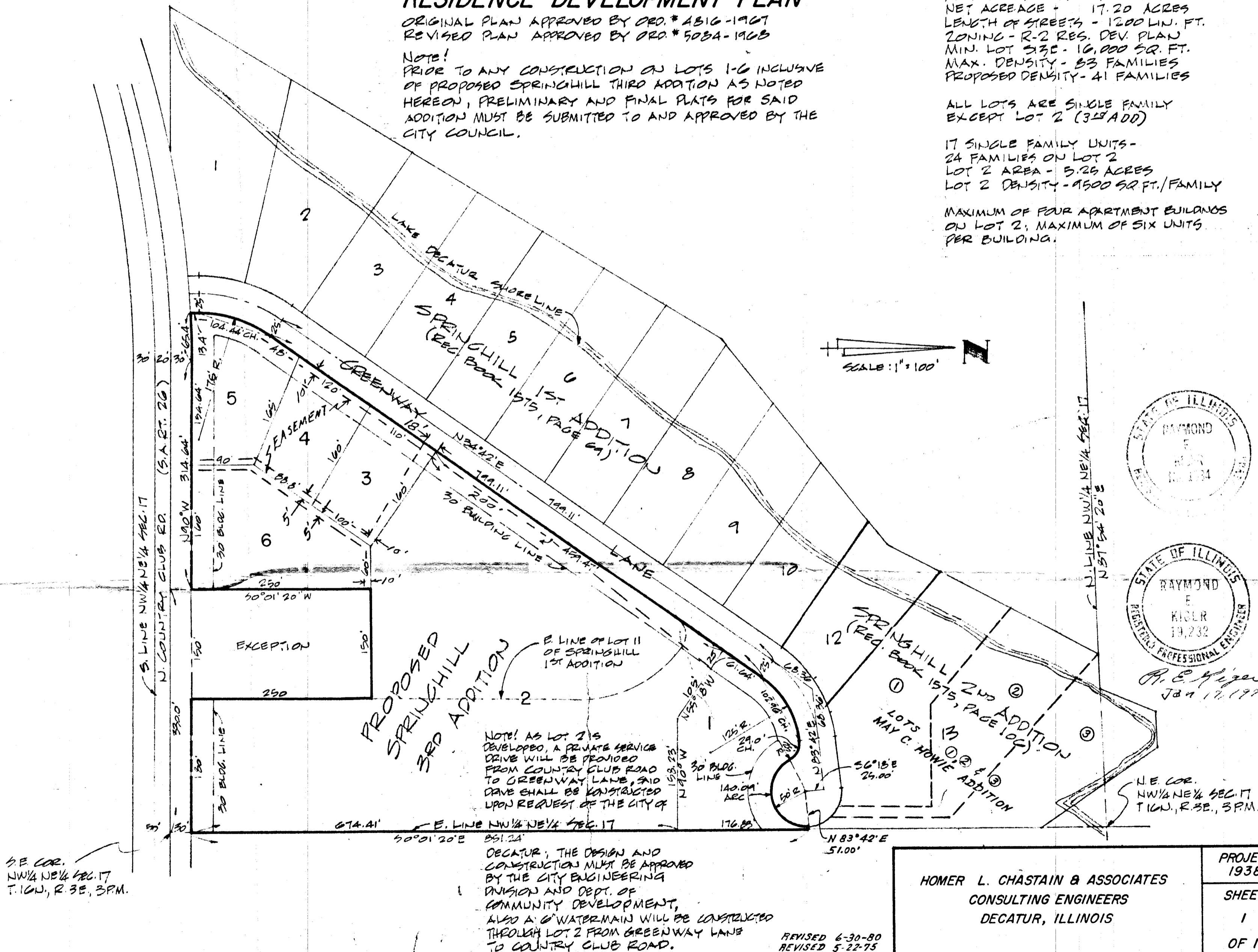
NOTE!  
PRIOR TO ANY CONSTRUCTION ON LOTS 1-6 INCLUSIVE OF PROPOSED SPRINGHILL THIRD ADDITION AS NOTED HEREON, PRELIMINARY AND FINAL PLATS FOR SAID ADDITION MUST BE SUBMITTED TO AND APPROVED BY THE CITY COUNCIL.

DEVELOPER - LAURENS COOK, et al  
TOTAL AREA - 18.04 ACRES  
AREA IN STREETS - 1.44 ACRES  
NET ACREAGE - 17.20 ACRES  
LENGTH OF STREETS - 1200 LIN. FT.  
ZONING - R-2 RES. DEV. PLAN  
MIN. LOT SIZE - 16,000 SQ. FT.  
MAX. DENSITY - 83 FAMILIES  
PROPOSED DENSITY - 41 FAMILIES

ALL LOTS ARE SINGLE FAMILY EXCEPT LOT 2 (3<sup>RD</sup> ADD)

17 SINGLE FAMILY UNITS -  
24 FAMILIES ON LOT 2  
LOT 2 AREA - 5.26 ACRES  
LOT 2 DENSITY - 4500 SQ. FT./FAMILY

MAXIMUM OF FOUR APARTMENT BUILDINGS ON LOT 2; MAXIMUM OF SIX UNITS PER BUILDING.



R. E. Kiger  
Jan 17, 1974

N.E. COR.  
NW 1/4 NE 1/4 SEC. 17  
T. 16N., R. 3E., 3PM.

S.E. COR.  
NW 1/4 NE 1/4 SEC. 17  
T. 16N., R. 3E., 3PM.

HOMER L. CHASTAIN & ASSOCIATES CONSULTING ENGINEERS DECATUR, ILLINOIS	PROJECT 1938
	SHEET 1
	OF 1

REVISED 6-30-80  
REVISED 5-22-75