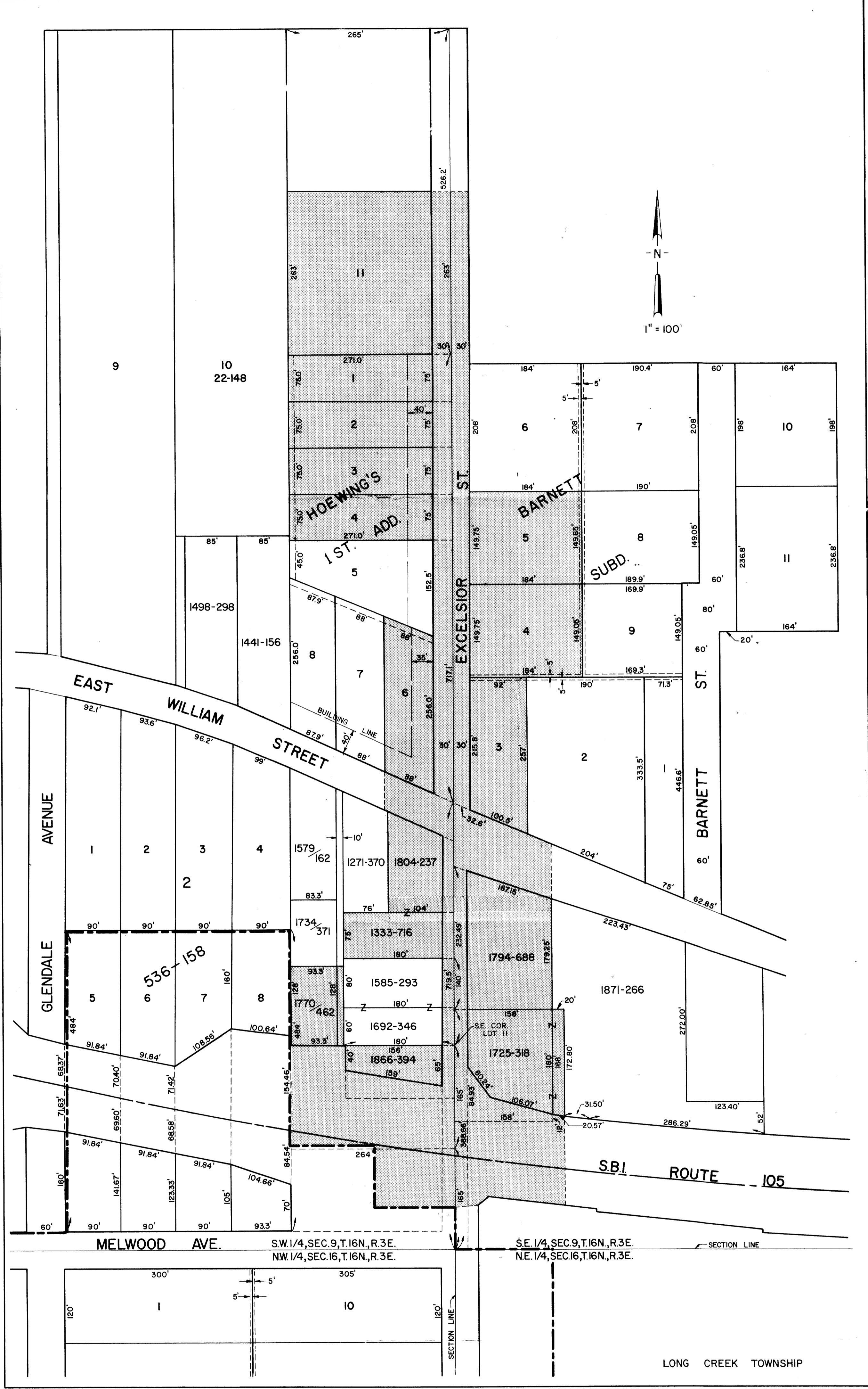


INDICATES TERRITORY ANNEXED
 INDICATES EXISTING CORPORATE LIMITS
 AREA - $\frac{11.5702}{0.01808}$ ACRES
 $\frac{2,290.0}{}$ LINEAL FEET OF ROAD

PLAT OF
 TERRITORY ANNEXED
 TO THE
 CITY OF DECATUR, ILLINOIS
 ORDINANCE No. 7182
 DATE NOVEMBER 8, 1976
 DEPARTMENT OF PUBLIC WORKS
 DIVISION OF ENGINEERING

William B. Jones



[Shaded Box] INDICATES TERRITORY ANNEXED
 [Dashed Line] INDICATES EXISTING CORPORATE LIMITS
 AREA - $\frac{11.5702}{0.01808}$ ACRES
 $\frac{2,290.0}{}$ LINEAL FEET OF ROAD

PLAT OF
 TERRITORY ANNEXED
 TO THE
 CITY OF DECATUR, ILLINOIS
 ORDINANCE No. 7182
 DATE NOVEMBER 8, 1976
 DEPARTMENT OF PUBLIC WORKS
 DIVISION OF ENGINEERING

William B. Sanders

CITY OF DECATUR, ILLINOIS
 DEPARTMENT OF PUBLIC WORKS
 DIVISION OF ENGINEERING