

Exhibit A

Shorewood DEVELOPMENT Decatur, IL.

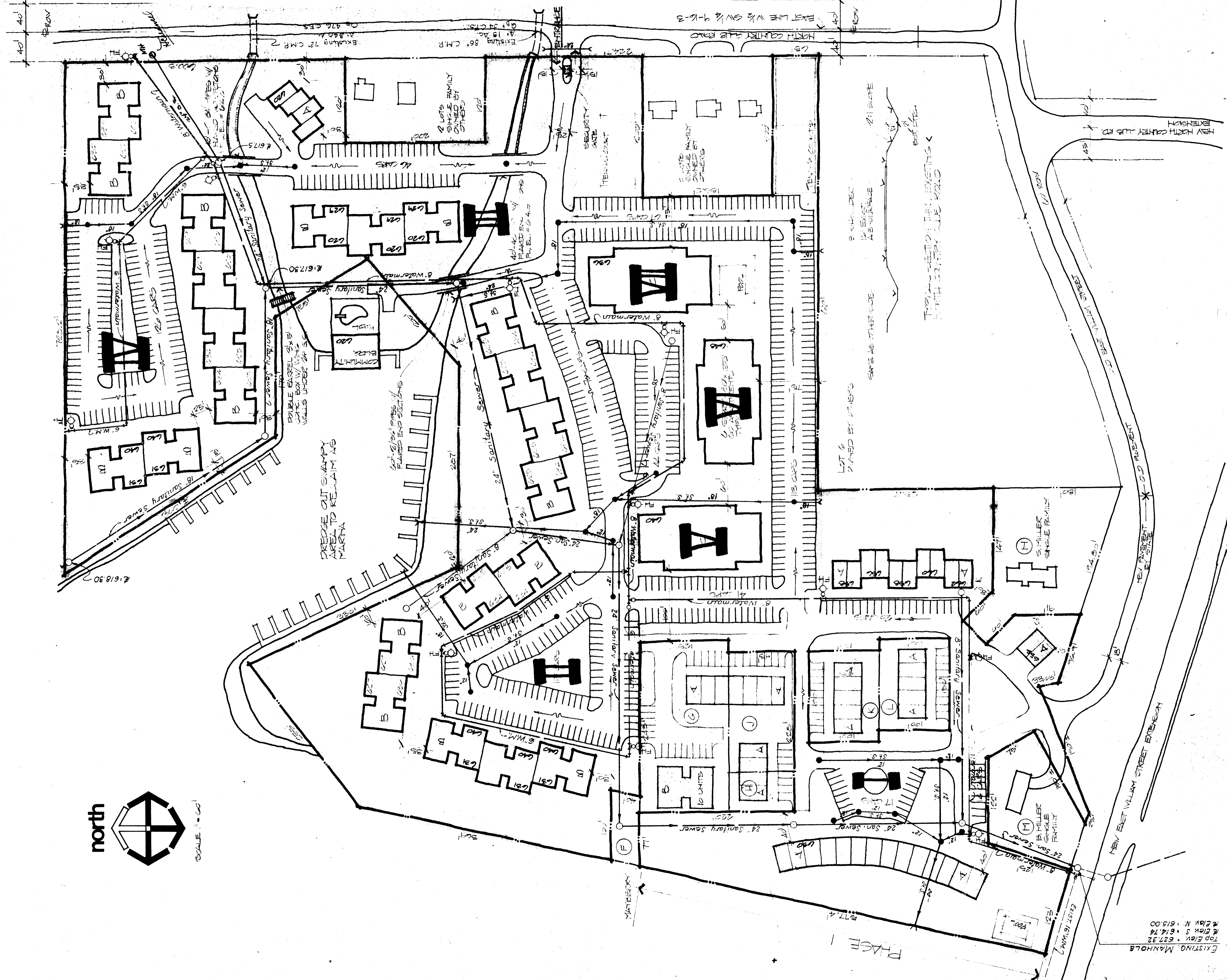
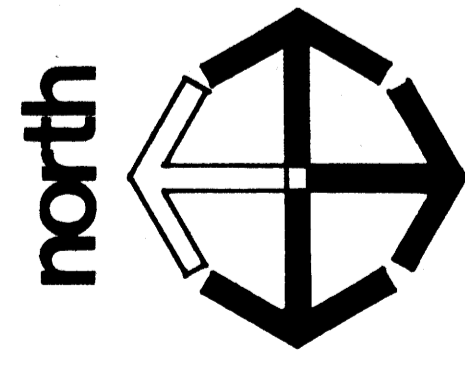
HARRY
AID
CALDWELL
ARCHITECT

DATE 11/2/76
1976

RESIDENCE
DEVELOPMENT
PLAN - R6

NOTES

1. DRIVES AND PARKING AREA TO BE 6" STONE AND 2" ASPHALT.
2. TYPICAL PARKING - 7' X 20' SPACE EACH SPACE.
3. TYPICAL DRIVE 24' WIDE.
4. ALL WORK PER CITY ORDINANCES, STANDARDS, AND BOA CODE, ILL. STATE PLUMBING CODE, NAT. ELEC. CODE, ILL. ROVER REGULATIONS.
5. SANITARY SEWERS AS SHOWN, BUILT AND TYPED OVER TO DECATUR SANITARY DISTRICT WITH EXEMPTIONS AS REQUIRED.
6. WATERMANS CONSTRUCTION PER CITY REGULATIONS WITH FREE HANDS 7.5' MIN.
7. STORY SEWERS EXCEPTED PER CITY REGULATIONS.



EXISTING MANHOLE
TOP Elev. = 627.32
E Elev. = 614.74
E Elev. N. = 615.00

1716