

[Shaded Box] INDICATES TERRITORY ANNEXED
 - - - - - INDICATES EXISTING CORPORATE LIMITS
 AREA - $\frac{0.5785}{0.0009}$ ACRES
 SQ. MILES
 ——— LINEAL FEET OF ROAD

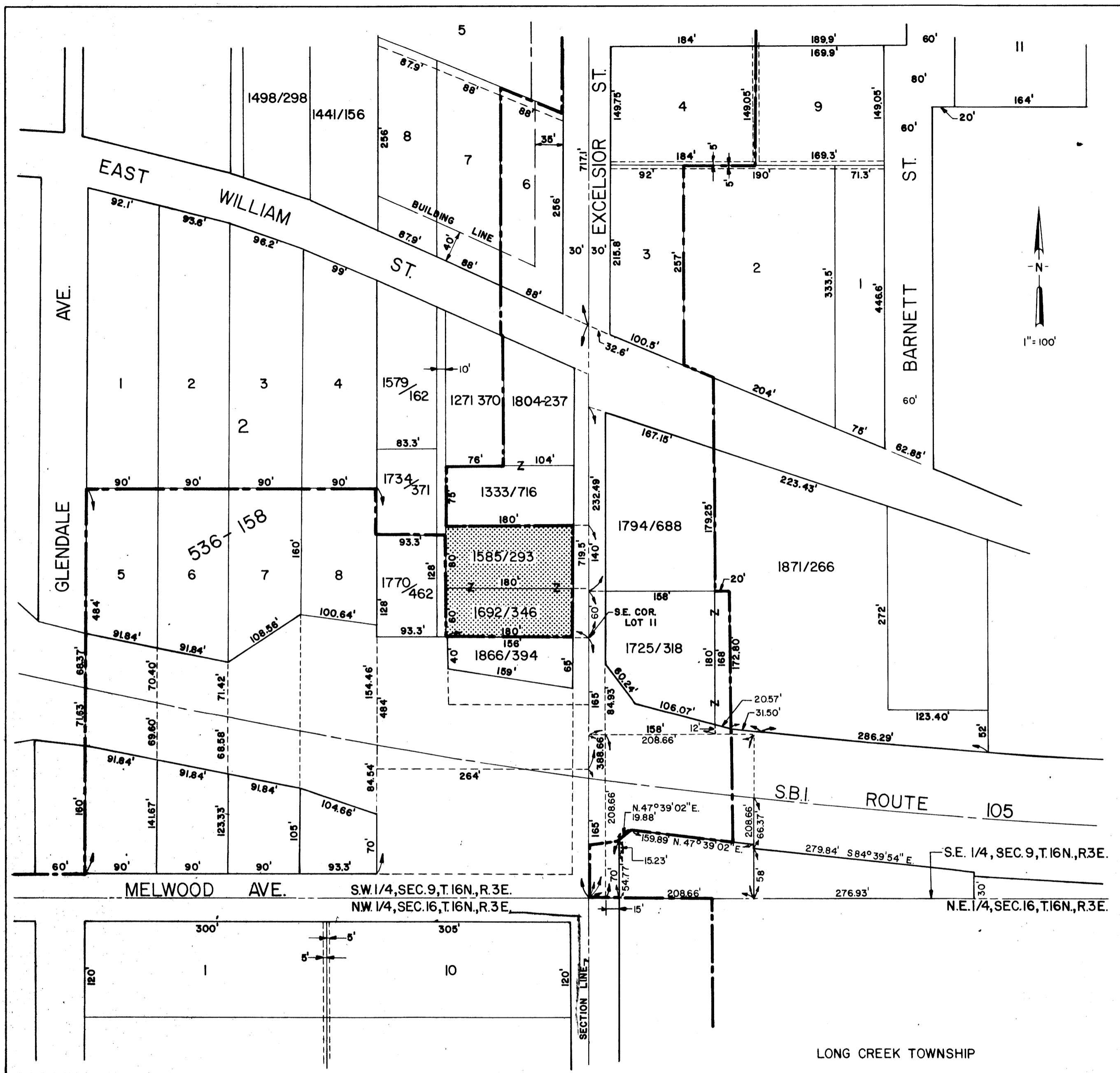





William B. Sands

PLAT OF
 TERRITORY ANNEXED
 TO THE
 CITY OF DECATUR, ILLINOIS

ORDINANCE No. 77-25
 DATE MARCH 7, 1977
 DEPARTMENT OF PUBLIC WORKS
 DIVISION OF ENGINEERING

CITY OF DECATUR, ILLINOIS
 DEPARTMENT OF PUBLIC WORKS
 DIVISION OF ENGINEERING



 INDICATES TERRITORY ANNEXED
 INDICATES EXISTING CORPORATE LIMITS
 AREA - $\frac{0.5785}{0.0009}$ ACRES
 SQ. MILES
 LINEAL FEET OF ROAD



William B. Sands

PLAT OF
 TERRITORY ANNEXED
 TO THE
 CITY OF DECATUR, ILLINOIS
 ORDINANCE No. 77-25
 DATE MARCH 7, 1977
 DEPARTMENT OF PUBLIC WORKS
 DIVISION OF ENGINEERING

CITY OF DECATUR, ILLINOIS
 DEPARTMENT OF PUBLIC WORKS
 DIVISION OF ENGINEERING