

1" = 100'

- INDICATES TERRITORY ANNEXED
- INDICATES EXISTING CORPORATE LIMITS
- AREA -  $\frac{1.7355}{0.0027}$  ACRES  
SQ. MILES
- $\frac{379}{}$  LINEAL FEET OF ROAD

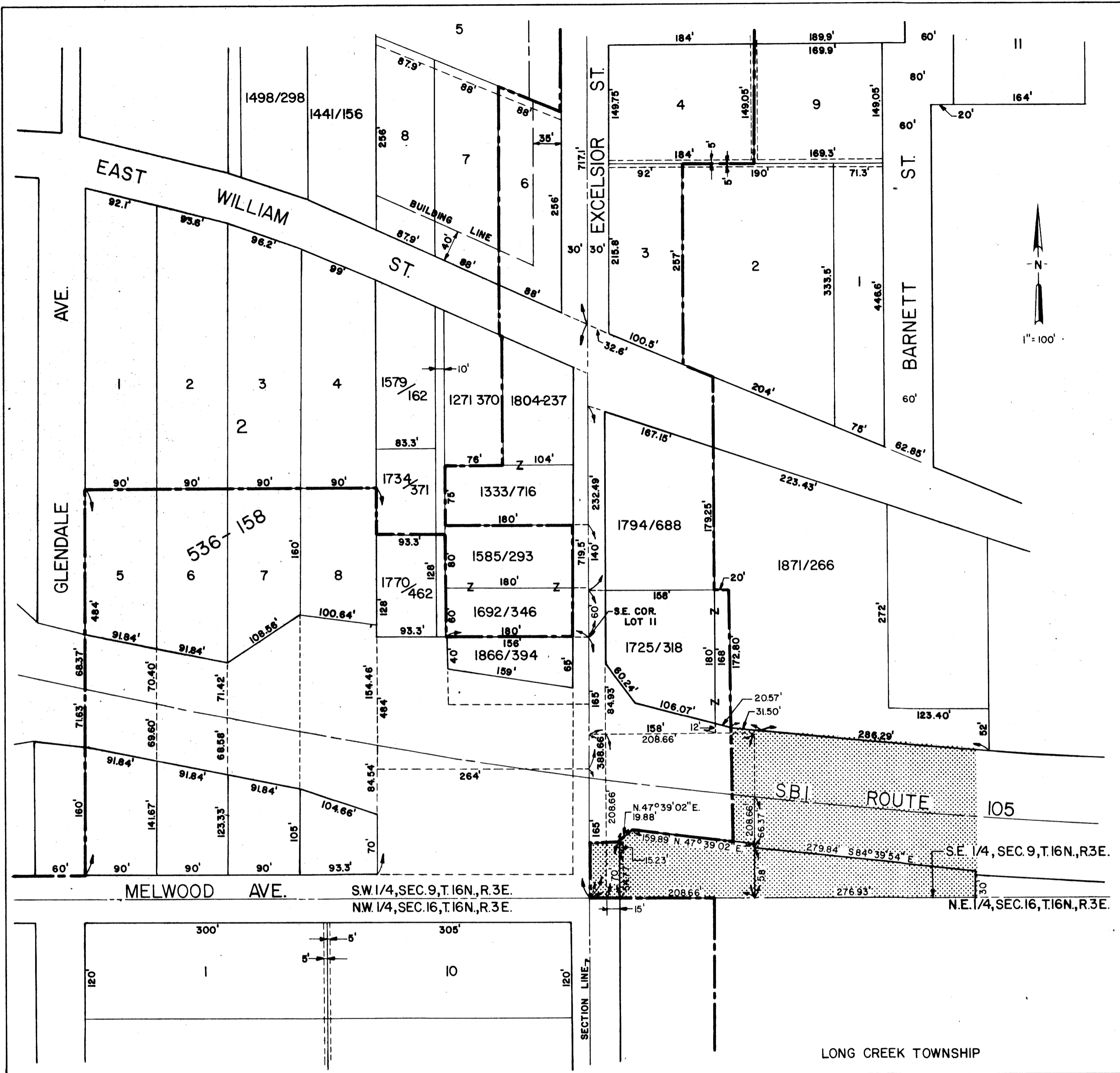


*William B. Sands*

PLAT OF  
TERRITORY ANNEXED  
TO THE  
CITY OF DECATUR, ILLINOIS

ORDINANCE No. 77-26  
DATE MARCH 7, 1977  
DEPARTMENT OF PUBLIC WORKS  
DIVISION OF ENGINEERING

CITY OF DECATUR, ILLINOIS  
DEPARTMENT OF PUBLIC WORKS  
DIVISION OF ENGINEERING



INDICATES TERRITORY ANNEXED  
 INDICATES EXISTING CORPORATE LIMITS  
 AREA - 1.7355 ACRES  
           0.0027 SQ. MILES  
           379 LINEAL FEET OF ROAD



*William B. Sands*

PLAT OF  
 TERRITORY ANNEXED  
 TO THE  
 CITY OF DECATUR, ILLINOIS  
 ORDINANCE No. 77-26  
 DATE MARCH 7, 1977  
 DEPARTMENT OF PUBLIC WORKS  
 DIVISION OF ENGINEERING

CITY OF DECATUR, ILLINOIS  
 DEPARTMENT OF PUBLIC WORKS  
 DIVISION OF ENGINEERING