

NE 1/4, SEC. 13-16-1

NW 1/4, SEC. 18-16-2

CITY LIMITS
HARRISTOWN

N. 89°06'18"E.
DECATUR CITY LIMITS

INDICATES TERRITORY ANNEXED
 INDICATES EXISTING CORPORATE LIMITS
 AREA - $\frac{17.0533}{.02670}$ ACRES
 $\frac{.02670}{.02670}$ SQ. MILES
 $\frac{255}{255}$ LINEAL FEET OF ROAD

PLAT OF
 TERRITORY ANNEXED
 TO THE
 CITY OF DECATUR, ILLINOIS

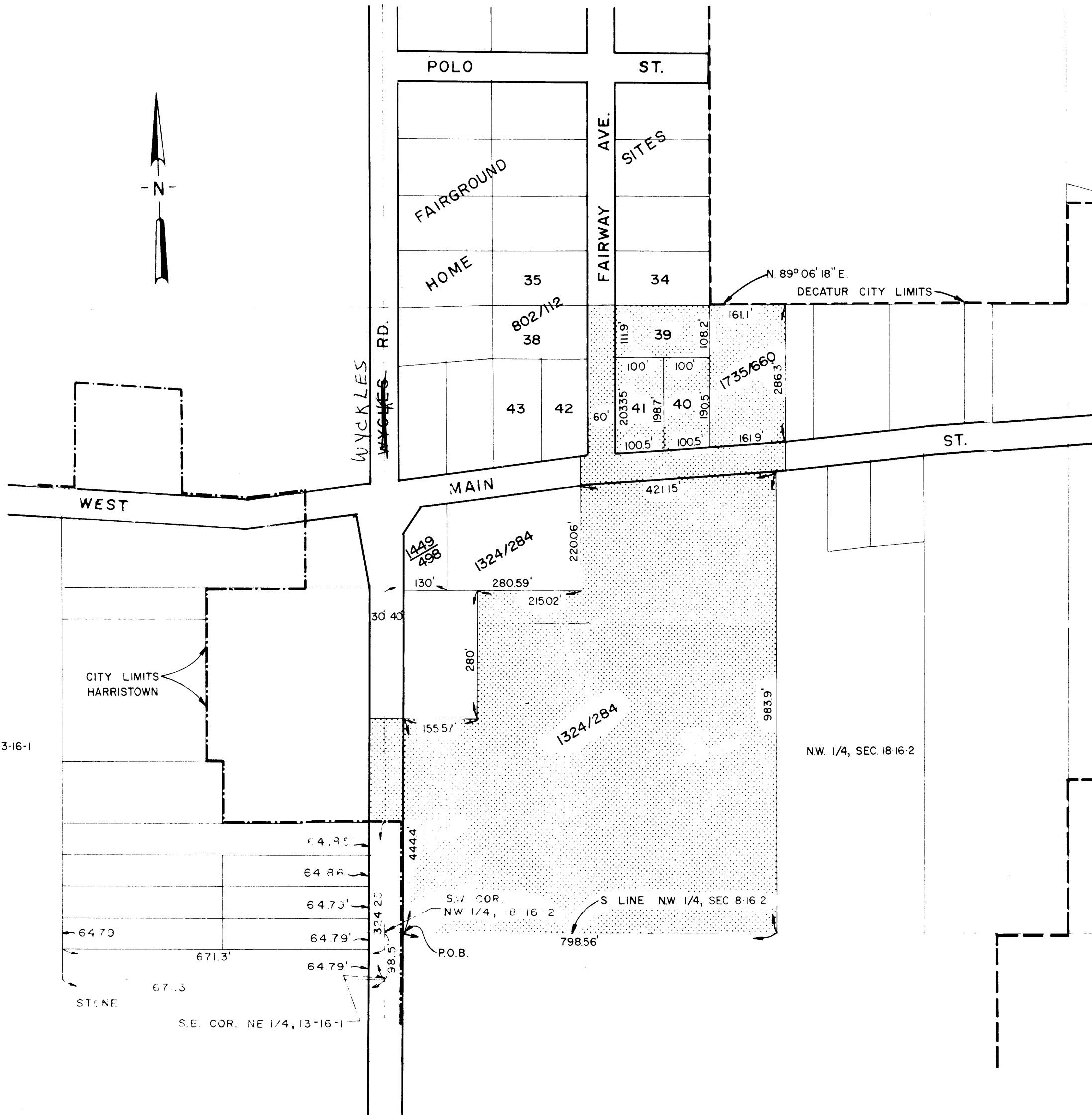
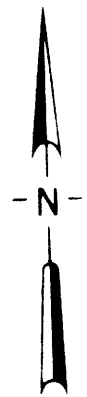
ORDINANCE No. 17-36

DATE: April 4, 1977

DEPARTMENT OF PUBLIC WORKS
DIVISION OF ENGINEERING

CITY OF DECATUR, ILLINOIS
 DEPARTMENT OF PUBLIC WORKS
 DIVISION OF ENGINEERING

William H. Saults



INDICATES TERRITORY ANNEXED

INDICATES EXISTING CORPORATE LIMITS

AREA - $\frac{17,033}{.02670}$ ACRES
SQ. MILES

355 LINEAL FEET OF ROAD

CITY OF DECATUR, ILLINOIS
DEPARTMENT OF PUBLIC WORKS
DIVISION OF ENGINEERING

William G. Sauls

PLAT OF
TERRITORY ANNEXED
TO THE
CITY OF DECATUR, ILLINOIS

ORDINANCE No. 77-36

DATE April 4, 1977

DEPARTMENT OF PUBLIC WORKS
DIVISION OF ENGINEERING