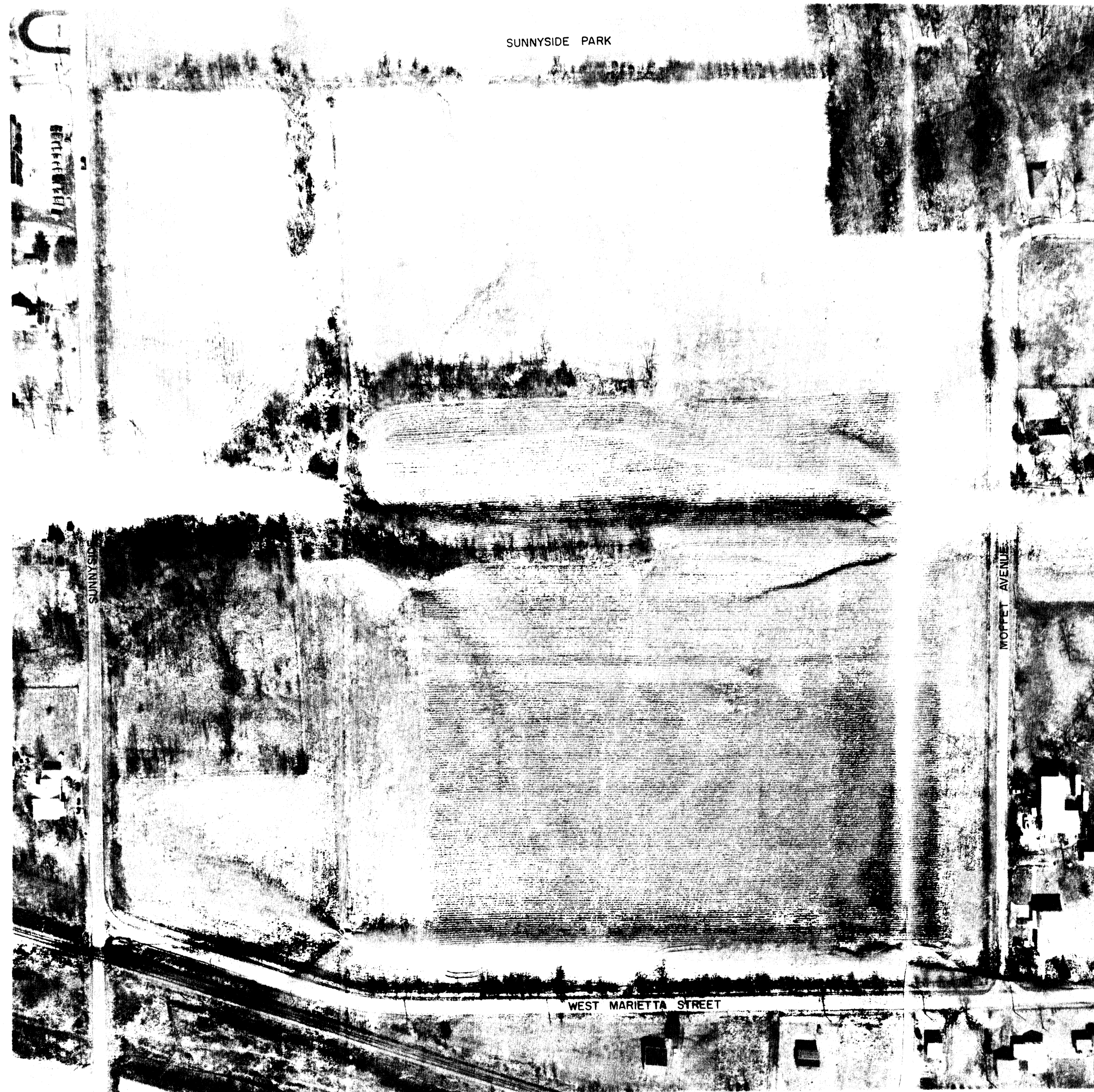


# RICHLAND HEIGHTS RESIDENCE DEVELOPMENT PLAN



AERIAL PHOTO  
1" = 100' ±



LOCATION MAP  
1" = 2000'

REVISIONS		SCALE	DATE	SHEET TITLE	PROJECT NO.
NO.	DATE	DESCRIPTION	9A-B-000	COVER SHEET	7110
1	8-14-77	REVISE S.E.W.	T.S.		
2			R.K.	RICHLAND HEIGHTS DECATUR ILL. NO. 5	
3					



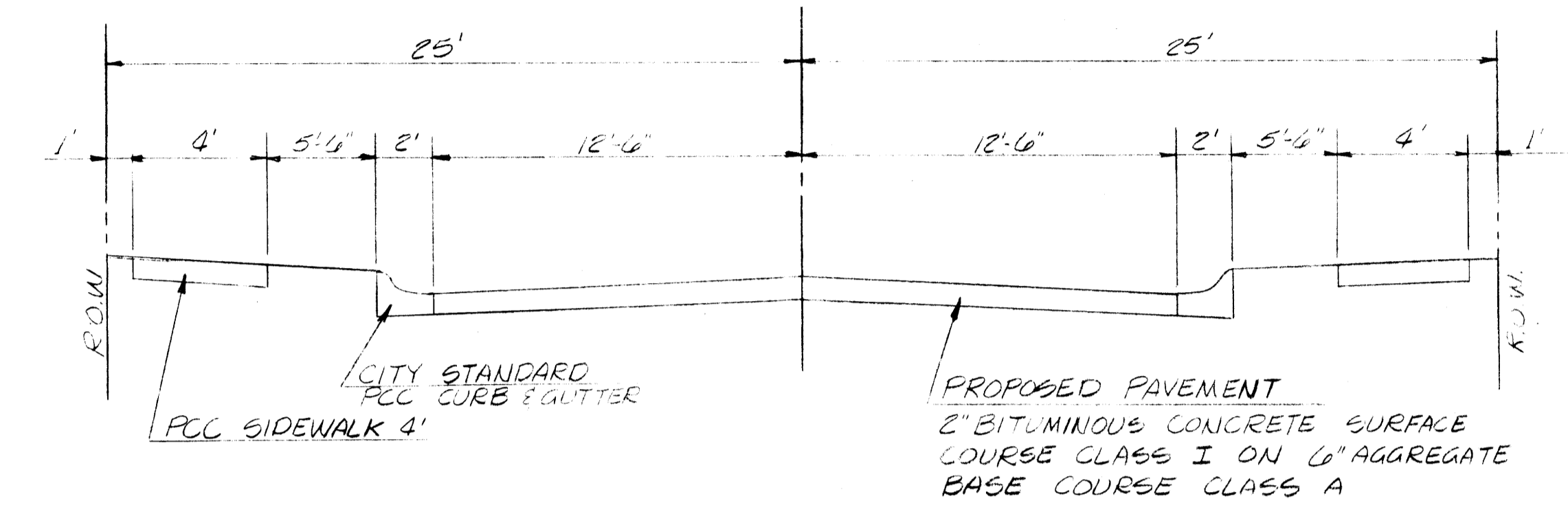
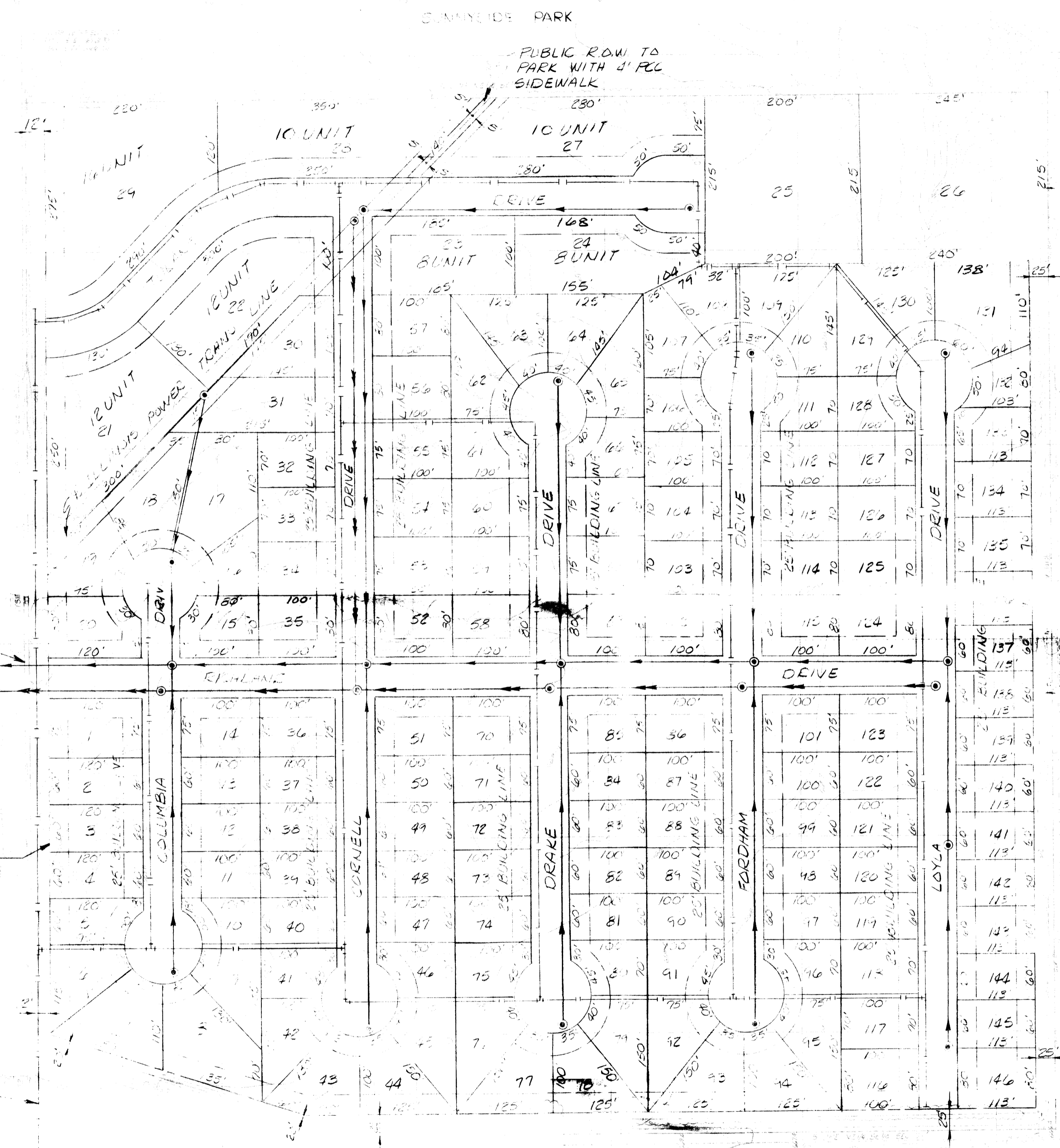
SCALE: 1"=100'

**LEGEND**  
 - - - - - STORM SEWER  
 - - - - - SANITARY SEWER  
 - - - - - 24" WATER MAIN

SANITARY SEWER SERVICE FROM EXTENSION OF SANITARY DISTRICT OF DECATUR INTERCEPTOR SEWER LOCATED ON R.R. C.O.W. 750' WEST OF SUNNYSIDE ROAD

EXISTING ROW LINE SUNNYSIDE ROAD

WATER SERVICE FOR DEVELOPMENT FROM MAIN TO BE EXTEND FROM SOUTH U.S. ROUTE 36 BY CITY OF DECATUR



TYPICAL PAVEMENT SECTION  
(NO SCALE)

- NOTES**
- SITE DATA
    - Total Area in Tract - 39.54 Acres
    - Area in Single Family Lots - 26.21 Acres
    - Area in Multi-Family Lots - 4.88 Acres
    - Area in Perimeter Streets - 2.03 Acres
    - Area in Interior Streets - 6.42 Acres
    - Number Single Family Lots - 137
    - Number Multi-Family Lots - 7
    - Total Family Units - 213
  - Fire Hydrants will be Installed in Accordance with City of Decatur Standards.
  - In Line Water Main Valves will be installed in Accordance with City of Decatur Standards.
  - Easements for Public Utilities will be Granted as Required.
  - Storm Sewers to be designed in accordance with City of Decatur standards.
  - LOTS 21, 22, 23, 24, 27, 28, & 29 ARE MULTI-FAMILY UNITS. ALL REMAINING LOTS ARE SINGLE FAMILY DWELLINGS.

**LEGAL DESCRIPTION:**  
 THE NORTHEAST QUARTER OF THE SOUTHEAST QUARTER OF SECTION 7, T14N, R2E, OF THE 3RD P.M., MACON COUNTY, ILLINOIS

1. BLIND UNIT CHANGED ROW FROM 25' TO 12' & ADDED 13' TO LOTS ON WEST SIDE OF MOORET AVE. 2. BUILDING LINE ON BUILDING	1"=100' TJE DATE: 10/15/77 CHECKED BY: RK	SHAFER-KRIMMEL-SILVER & ASSOCIATES, INC. CONSULTING ENGINEERS 2900 N. Broadway • P.O. Box 2233 • Decatur, Illinois, 62526 • 217/877-2100	RESIDENCE DEVELOPMENT PLAN 7110 RICHLAND HEIGHTS DECATUR, ILLINOIS	2 OF 2
---	--	---	--	--------------