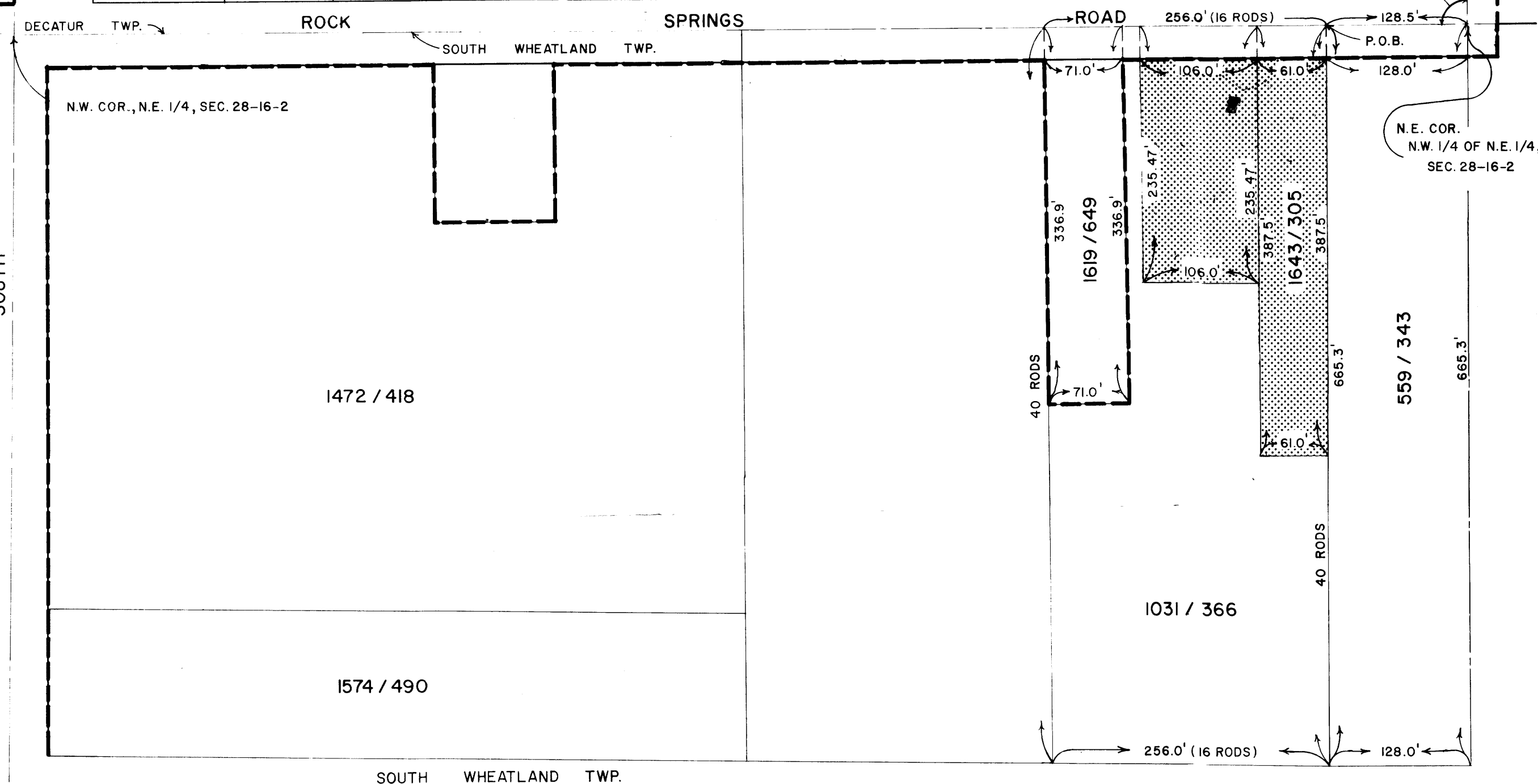
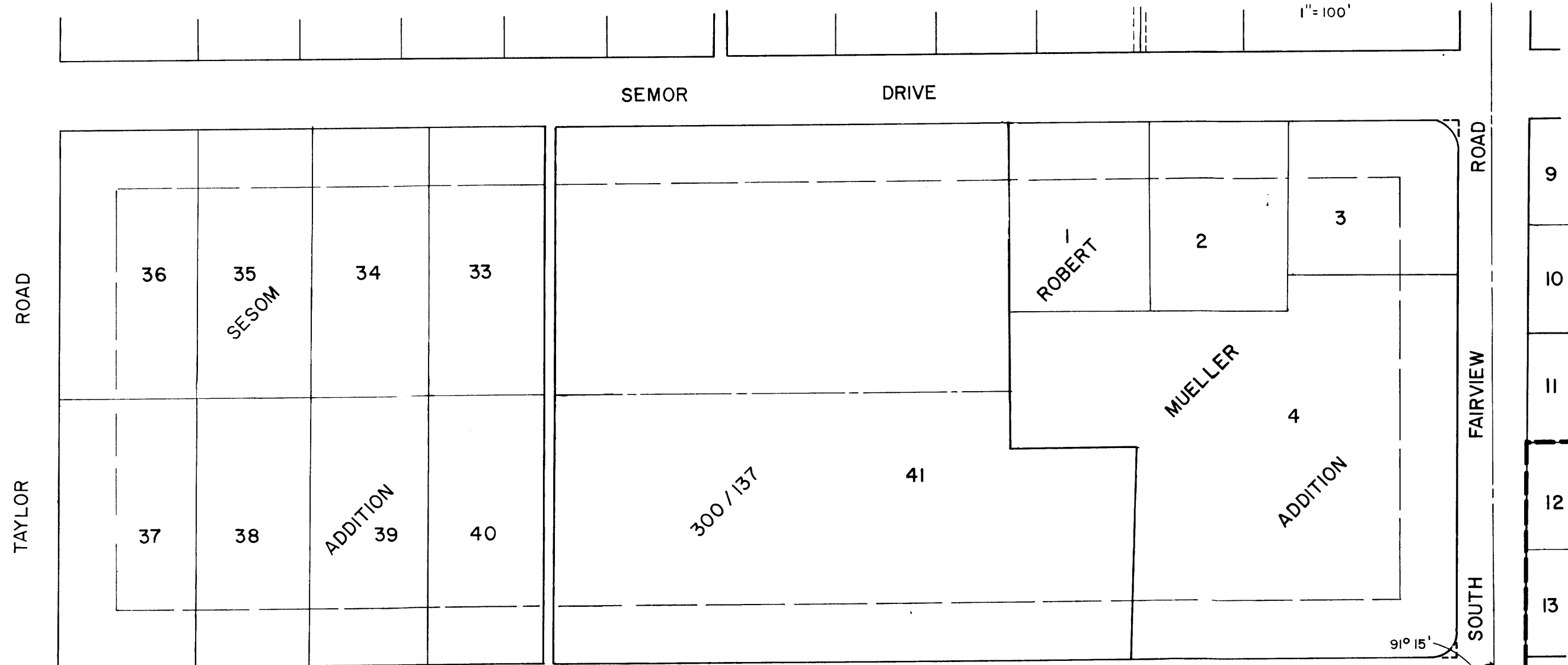



DECATUR TWP.



 INDICATES TERRITORY ANNEXED  
 - - - INDICATES EXISTING CORPORATE LIMITS  
 AREA -  $\frac{1.000627}{0.001563}$  ACRES / SQ. MILES  
 \_\_\_\_\_ LINEAL FEET OF ROAD

PLAT OF  
 TERRITORY ANNEXED  
 TO THE  
 CITY OF DECATUR, ILLINOIS  
 ORDINANCE No. 77-155  
 DATE SEPTEMBER 6, 1977  
 DEPARTMENT OF PUBLIC WORKS  
 DIVISION OF ENGINEERING

*William B. Sauer*

CITY OF DECATUR, ILLINOIS  
 DEPARTMENT OF PUBLIC WORKS  
 DIVISION OF ENGINEERING