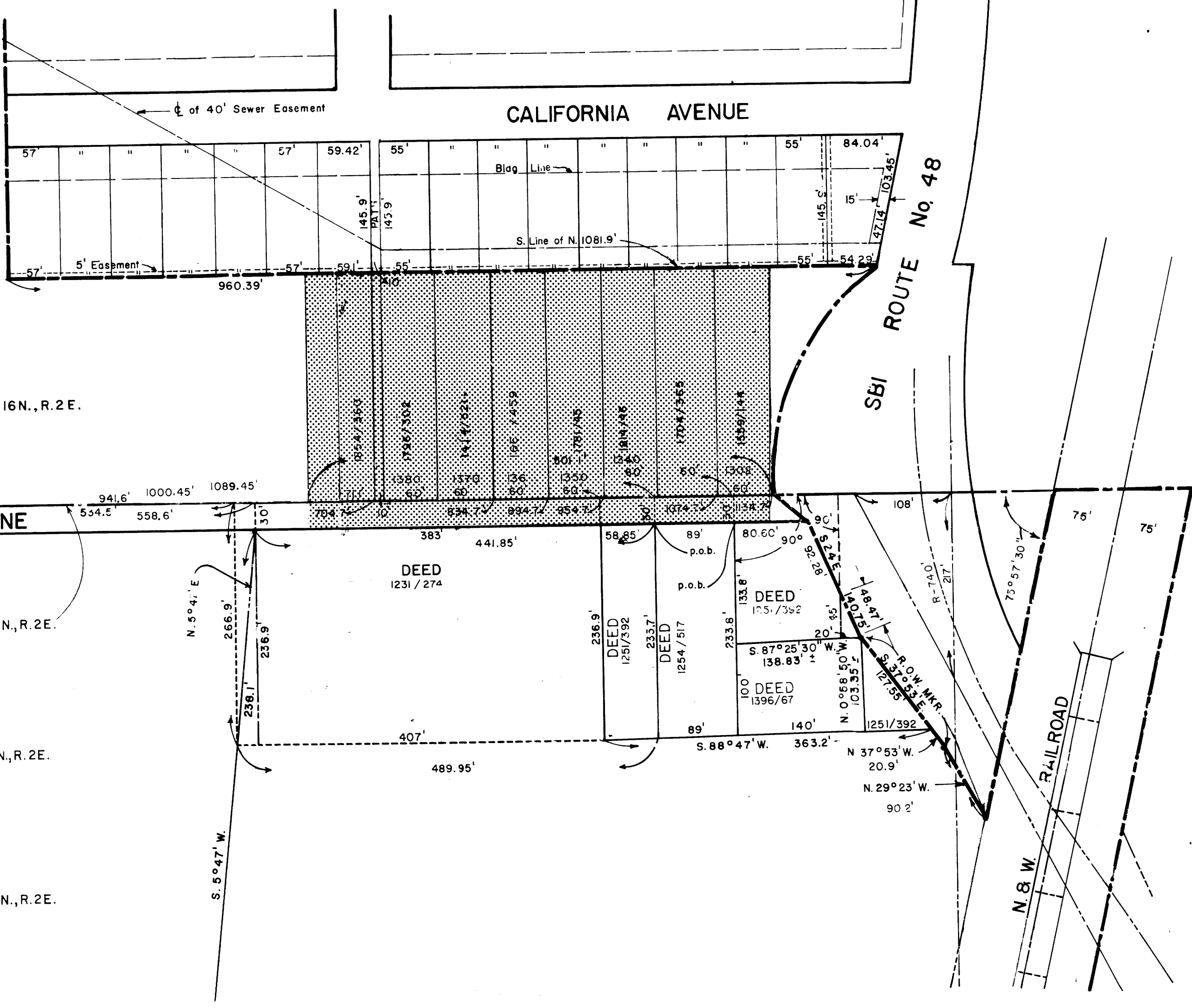


S.E. 1/4, SEC. 16, T. 16N., R. 2E.



S. LINE S.E. 1/4, SEC. 16, T. 16N., R. 2E.

BOWSHIER LANE

N. LINE N.E. 1/4, SEC. 21, T. 16N., R. 2E.

N.E. 1/4, SEC. 21, T. 16N., R. 2E.

W. LINE N.E. 1/4, SEC. 21, T. 16N., R. 2E.

- INDICATES TERRITORY ANNEXED
- INDICATES EXISTING CORPORATE LIMITS
- AREA — $\frac{3.22103}{0.005032}$ ACRES
SQ. MILES
- $\frac{501}{}$ LINEAL FEET OF ROAD

PLAT OF
TERRITORY ANNEXED
TO THE
CITY OF DECATUR, ILLINOIS

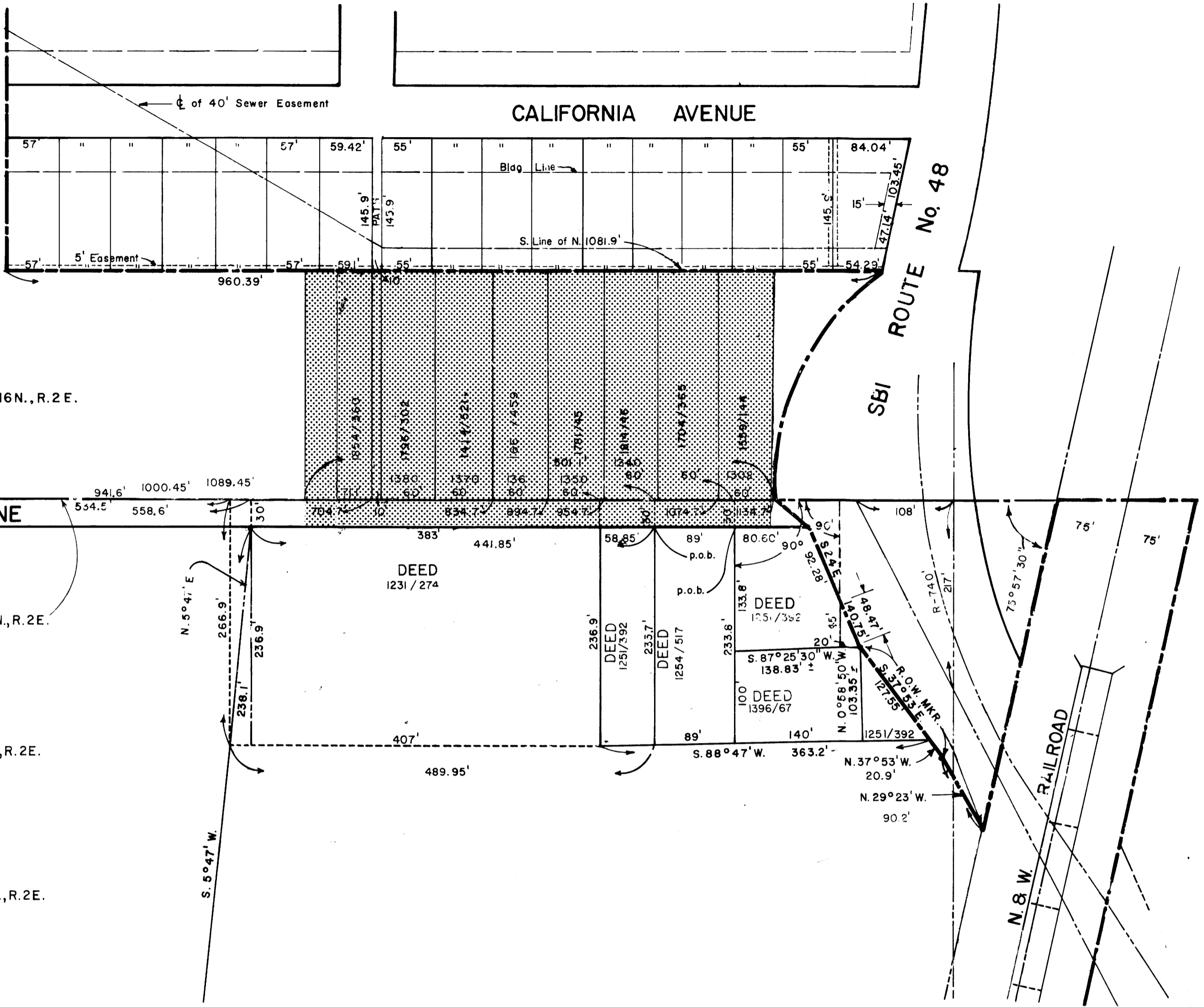
ORDINANCE No. 78-45


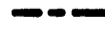
DATE APRIL 3, 1978

DEPARTMENT OF PUBLIC WORKS
DIVISION OF ENGINEERING

CITY OF DECATUR, ILLINOIS
DEPARTMENT OF PUBLIC WORKS
DIVISION OF ENGINEERING

S.E. 1/4, SEC. 16, T. 16N., R. 2E.



 INDICATES TERRITORY ANNEXED
 INDICATES EXISTING CORPORATE LIMITS
 AREA — 3.22103 ACRES
 0.005032 SQ. MILES
 501 LINEAL FEET OF ROAD

PLAT OF
 TERRITORY ANNEXED
 TO THE
 CITY OF DECATUR, ILLINOIS
 ORDINANCE No. 78-45
 DATE APRIL 3, 1978
 DEPARTMENT OF PUBLIC WORKS
 DIVISION OF ENGINEERING

CITY OF DECATUR, ILLINOIS
 DEPARTMENT OF PUBLIC WORKS
 DIVISION OF ENGINEERING