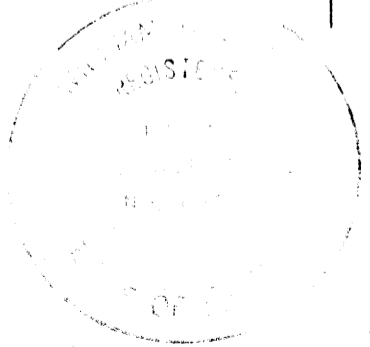
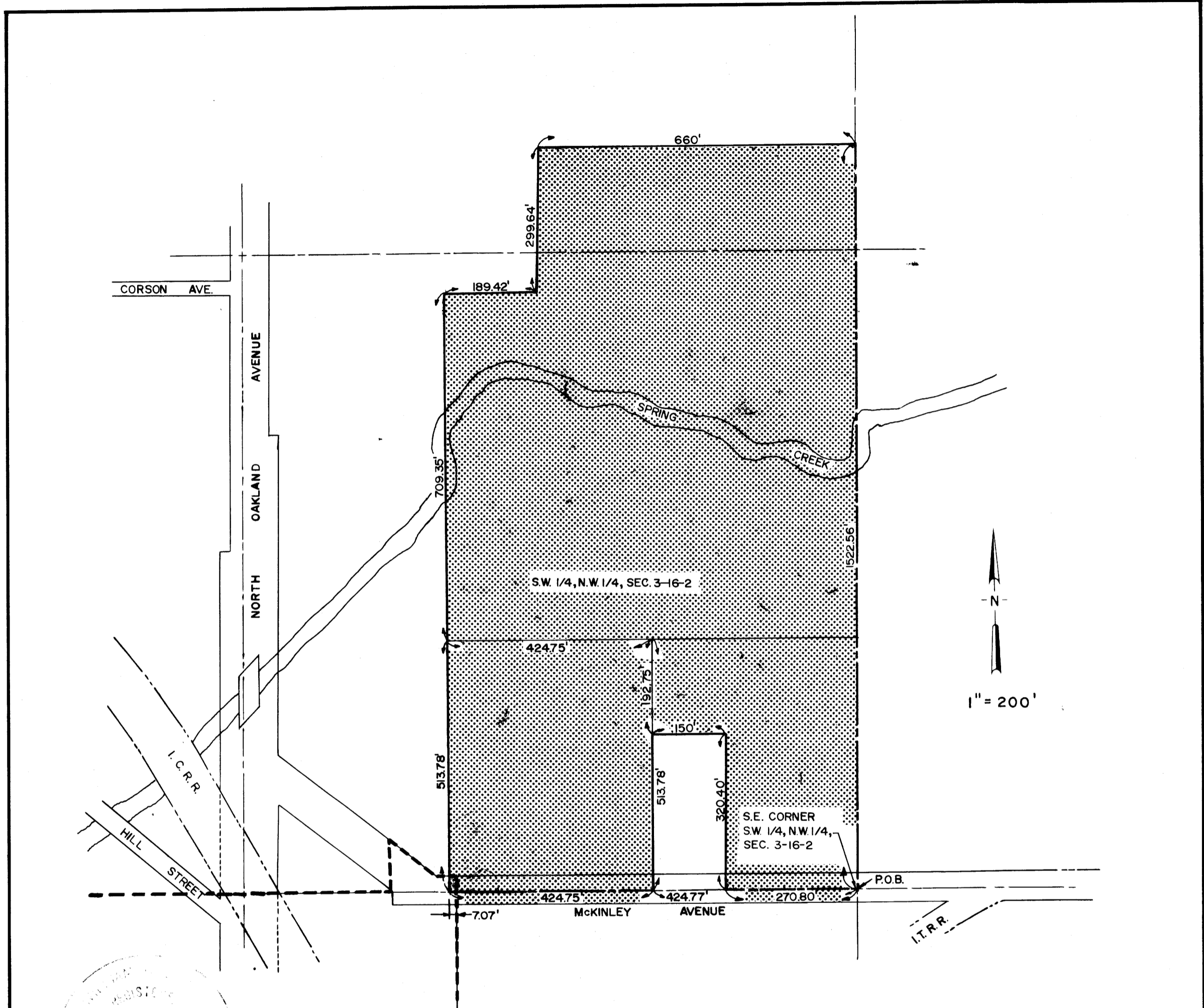


William B. Sands

CITY OF DECATUR ILLINOIS
DEPARTMENT OF PUBLIC WORKS
DIVISION OF ENGINEERING

INDICATES TERRITORY ANNEXED
 - - - - - INDICATES EXISTING CORPORATE LIMITS
 AREA — 27.3675 ACRES
 AREA — 0.04275 SQ. MILES
 AREA — 695.55 LINEAL FEET OF ROAD

PLAT OF
 TERRITORY ANNEXED
 TO THE
 CITY OF DECATUR, ILLINOIS
 ORDINANCE No. 78-48
 DATE APRIL 17, 1978



William B. Gault

CITY OF DECATUR ILLINOIS
 DEPARTMENT OF PUBLIC WORKS
 DIVISION OF ENGINEERING

[Hatched Box] INDICATES TERRITORY ANNEXED
 [Dashed Line] INDICATES EXISTING CORPORATE LIMITS
 AREA — 27.3675 ACRES
 AREA — 0.04275 SQ. MILES
 AREA — 695.55 LINEAL FEET OF ROAD

PLAT OF
 TERRITORY ANNEXED
 TO THE
 CITY OF DECATUR, ILLINOIS
 ORDINANCE No. 78-48
 DATE APRIL 17, 1978