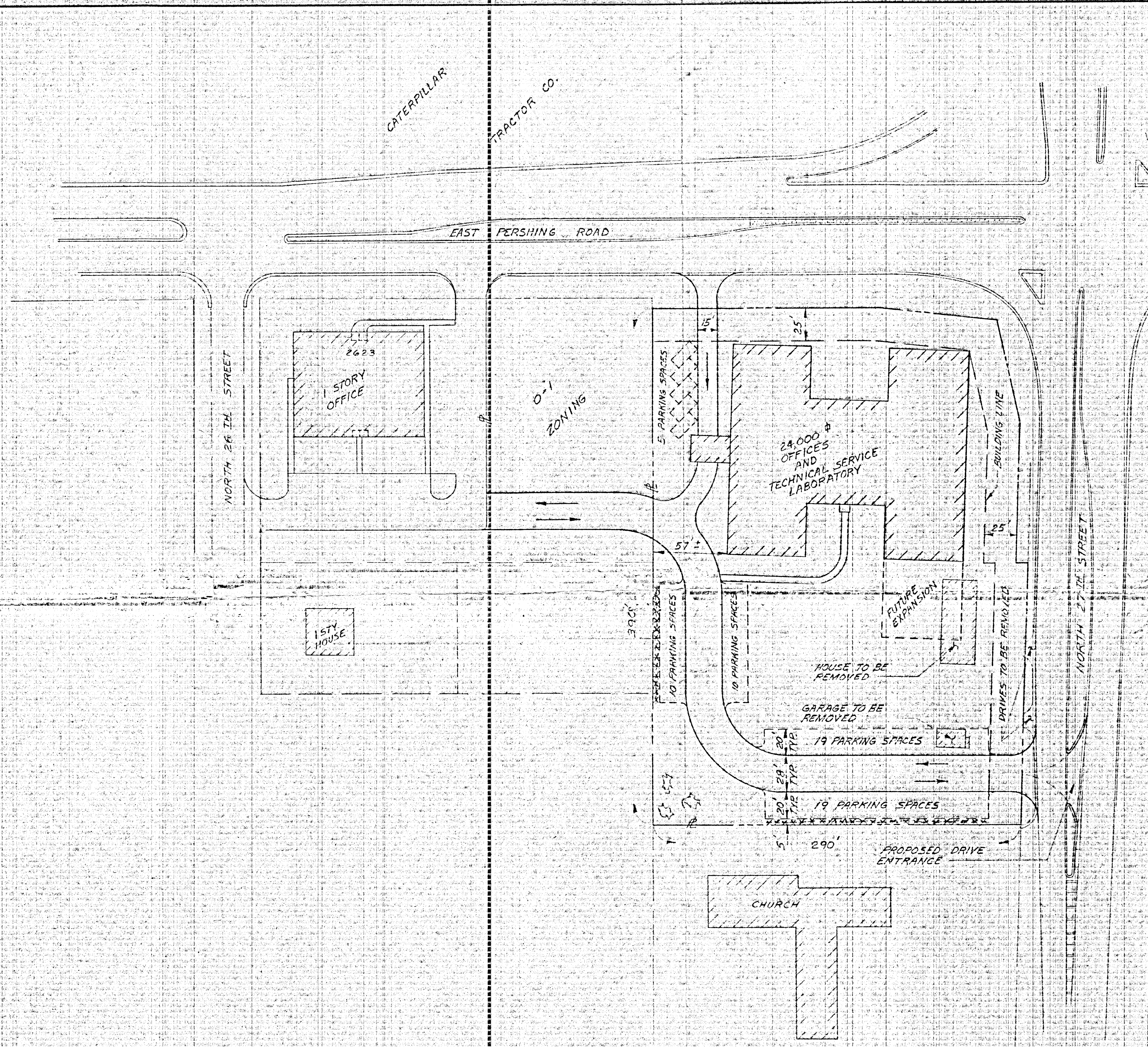


SCALE 1" = 40'



NOTES

1. PRIOR TO CONSTRUCTION A DETAIL SITE PLAN AND CONSTRUCTION DRAWINGS OF IMPROVEMENTS INCLUDING GEOMETRIC CHANGES TO EXISTING PAVEMENT WILL BE SUBMITTED TO THE CITY OF DECATUR, ILLINOIS FOR APPROVAL.
2. ALL DRIVES AND PARKING AREAS WILL BE SURFACED WITH 2" BITUMINUS CONCRETE ON 6" AGGREGATE BASE.
3. PARKING REQUIREMENTS FOR O-1 ZONING ARE 3 SPACES PLUS 1 SPACE FOR EACH 400 sq ft. REQUIRES 58 SPACES, SPACES PROVIDED = 63.
4. *** INDICATES HEDGE ROW.

1	REMOVED NOTE 1	BY	DATE
1	ADD HEDGE ROW	BY	DATE
REV. NO.	DESCRIPTION	BY	DATE
EAST PERSHING OFFICE PLAZA			
Design	LOTS 1, 2, 3 AND 4 OF BLOCK ONE IN VIRGINIA ADDITION	SCALE	1" = 40'
Drawn		B & W PROJECT NO.	780503
Date		CLIENT PROJECT NO.	
Checked	DEVELOPMENT PLAN FOR M-3 ZONING	DRAWING NO.	780503-1
Date			
Approved	BLANK AND WESSELINK & ASSOCIATES ENGINEERS CONSULTANTS		
Date			
Client	DECATUR, ILLINOIS		
Date			

AUG 10 1978