

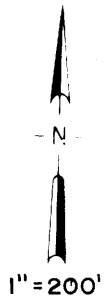
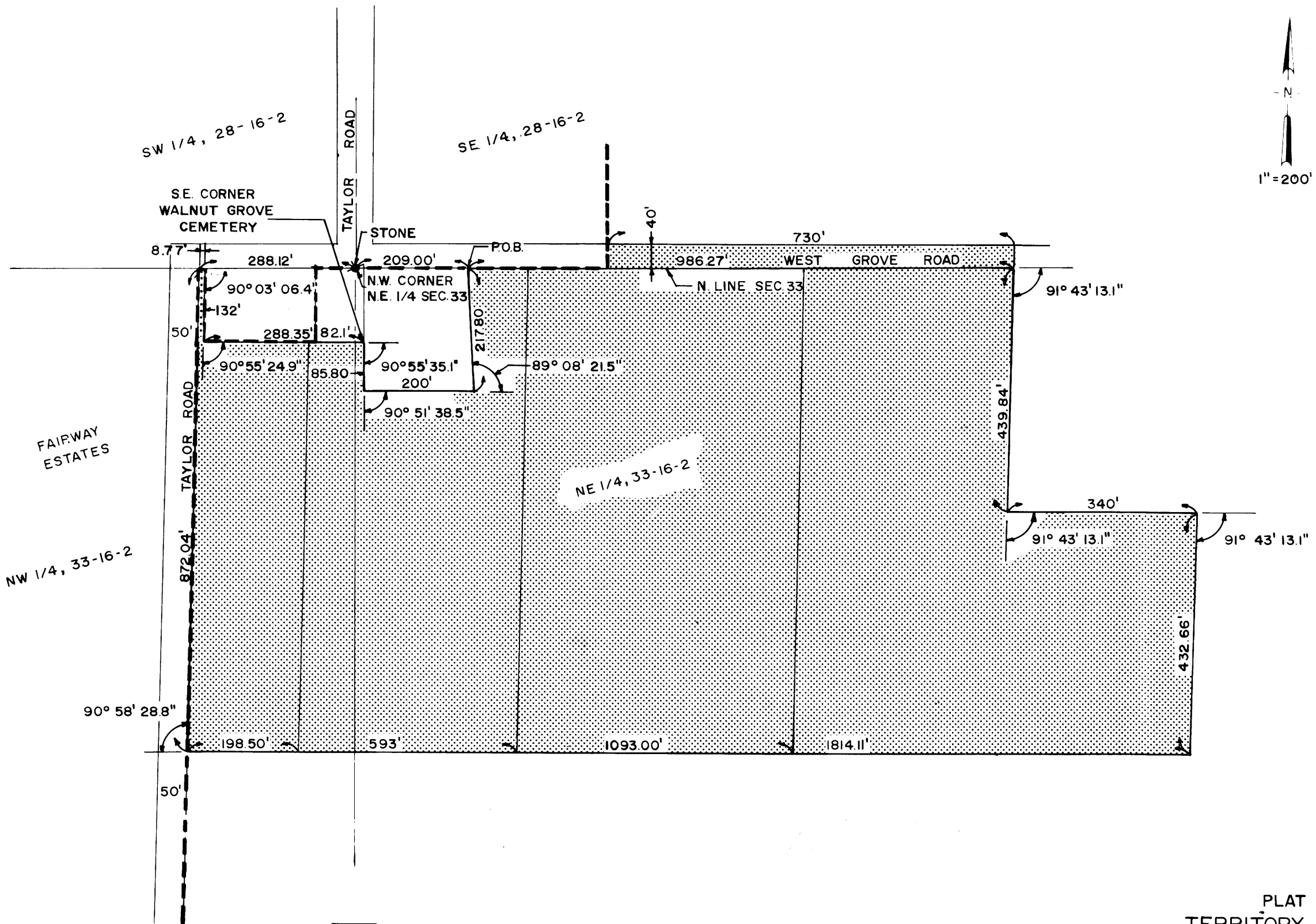
INDICATES TERRITORY ANNEXED
 INDICATES EXISTING CORPORATE LIMITS
 AREA — $\frac{31.68}{0.0495}$ ACRES
 $\frac{730}{}$ SQ MILES
 $\frac{730}{}$ LINEAL FEET OF ROAD

PLAT OF
 TERRITORY ANNEXED
 TO THE
 CITY OF DECATUR, ILLINOIS

ORDINANCE No. 78-139
 DATE September 11, 1978

William B. Sands

CITY OF DECATUR, ILLINOIS
 DEPARTMENT OF PUBLIC WORKS
 DIVISION OF ENGINEERING



FAIRWAY
ESTATES

NW 1/4, 33-16-2

SW 1/4, 28-16-2

SE 1/4, 28-16-2

NE 1/4, 33-16-2

SE CORNER
WALNUT GROVE
CEMETERY

STONE

N.W. CORNER
N.E. 1/4 SEC. 33

N. LINE SEC 33

WEST GROVE ROAD

TAYLOR ROAD

TAYLOR ROAD

P.O.B.

8.77'

288.12'

209.00'

40'

730'

986.27'

91° 43' 13.1"

50'

288.35'

82.1'

217.80'

90° 03' 06.4"

132'

90° 55' 24.9"

85.80'

90° 55' 35.1"

200'

90° 51' 38.5"

89° 08' 21.5"

439.84'

340'

91° 43' 13.1"

91° 43' 13.1"

90° 58' 28.8"

50'

198.50'

593'

1093.00'

1814.11'

432.66'

INDICATES TERRITORY ANNEXED

INDICATES EXISTING CORPORATE LIMITS

AREA — 31.68 ACRES

0.0495 SQ MILES

730 LINEAL FEET OF ROAD

PLAT OF
TERRITORY ANNEXED
TO THE
CITY OF DECATUR, ILLINOIS

William B. Sands

ORDINANCE No. 78-139
DATE September 11, 1978

CITY OF DECATUR, ILLINOIS
DEPARTMENT OF PUBLIC WORKS
DIVISION OF ENGINEERING