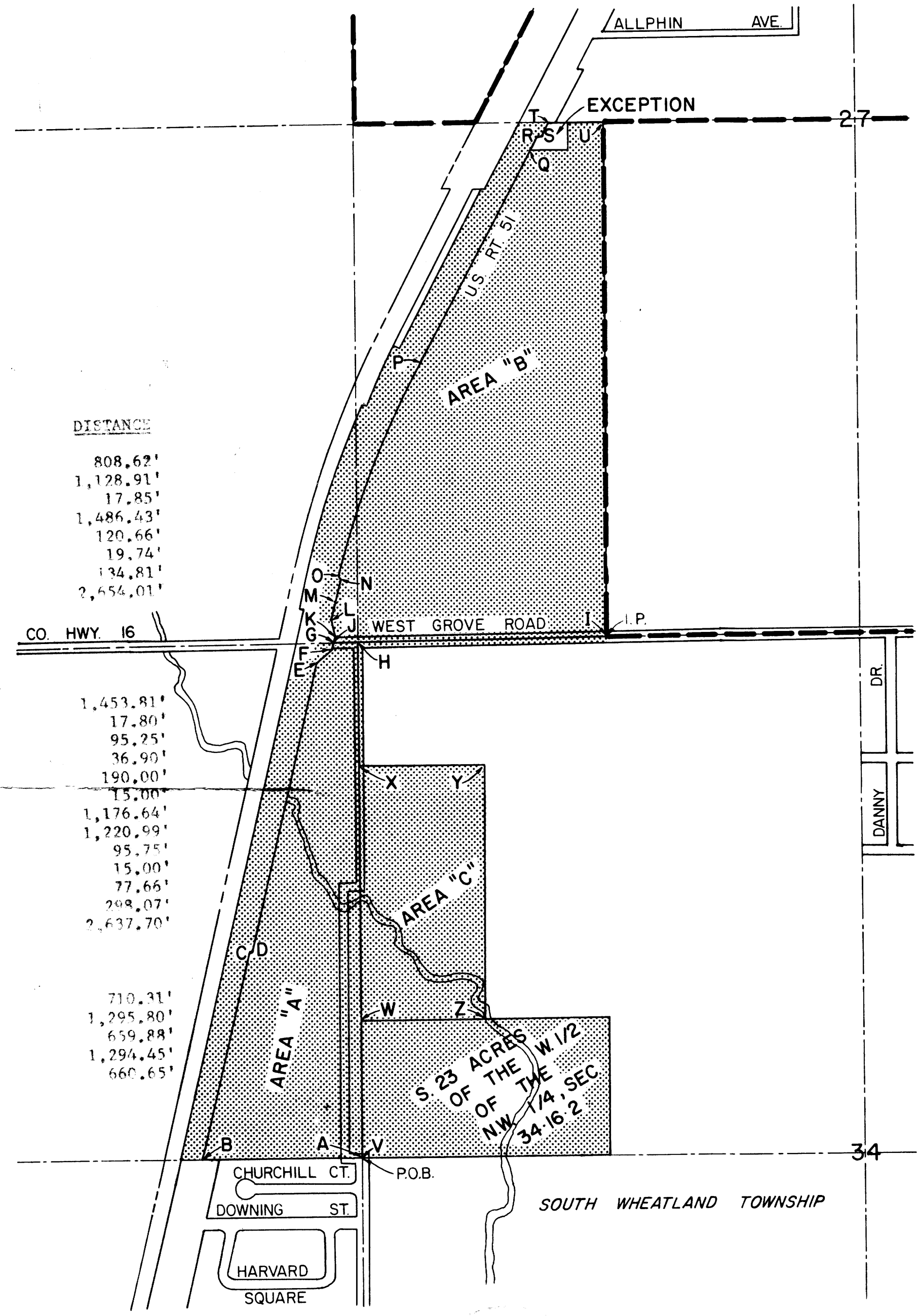


LINE	BEARING	DISTANCE
Area "A"		
AB	S. 89°29'10" West	808.62'
BC	N. 12°34'14" East	1,128.91'
CD	S. 89°17'49" East	17.85'
DE	N. 12°36'28" East	1,486.43'
EF	N. 41°40'47" East	120.66'
FG	N. 13°00'59" East	19.74'
GH	N. 89°51'18" East	134.81'
HA	S. 0°00'16" East	2,654.01'
Area "B"		
II	N. line of S. 23 rd Sec., Section 27 & S. line of S. 23 rd Sec., Section 28	1,453.81'
JK	N. 13°13'10" East	17.80'
KL	N. 8°11'46" West	95.25'
LM	N. 13°41'45" East	36.90'
LN	N. 13°42'28" East	190.00'
NO	N. 87°41'52" West	15.00'
OP (Chord)	N. 21°59'47" East	1,176.64'
PQ	N. 28°51'54" East	1,220.99'
QR	N. 28°43'32" East	95.75'
RS	S. 61°14'56" East	15.00'
ST	N. 28°46'51" East	77.66'
TU	S. 89°59'25" East	298.07'
UI	S. 0°00'17" West	2,637.70'
Area "C"		
VW	N. 0°00'16" West	710.31'
WX	N. 0°00'16" West	1,295.80'
XY	N. 89°47'52" East	659.88'
YZ	S. 0°02'17" East	1,294.45'
ZB	N. 89°40'51" East	660.65'



INDICATES TERRITORY ANNEXED
 INDICATES EXISTING CORPORATE LIMITS
 AREA 152.19753 ACRES
 AREA 0.2377325 SQ. MILES
9700 LINEAL FEET OF ROAD

William D. Sanders

PLAT OF
 TERRITORY ANNEXED
 TO THE
 CITY OF DECATUR, ILLINOIS
 ORDINANCE No. 79-15
 DATE February 5, 1979

CITY OF DECATUR, ILLINOIS
 DEPARTMENT OF PUBLIC WORKS
 DIVISION OF ENGINEERING