

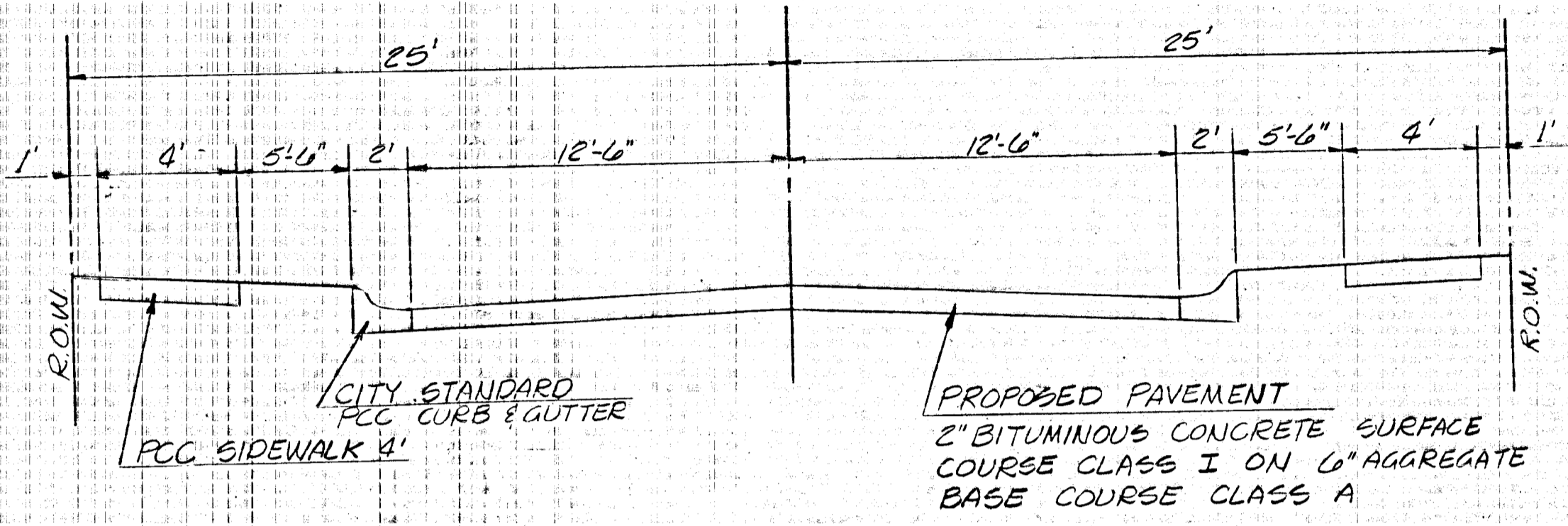
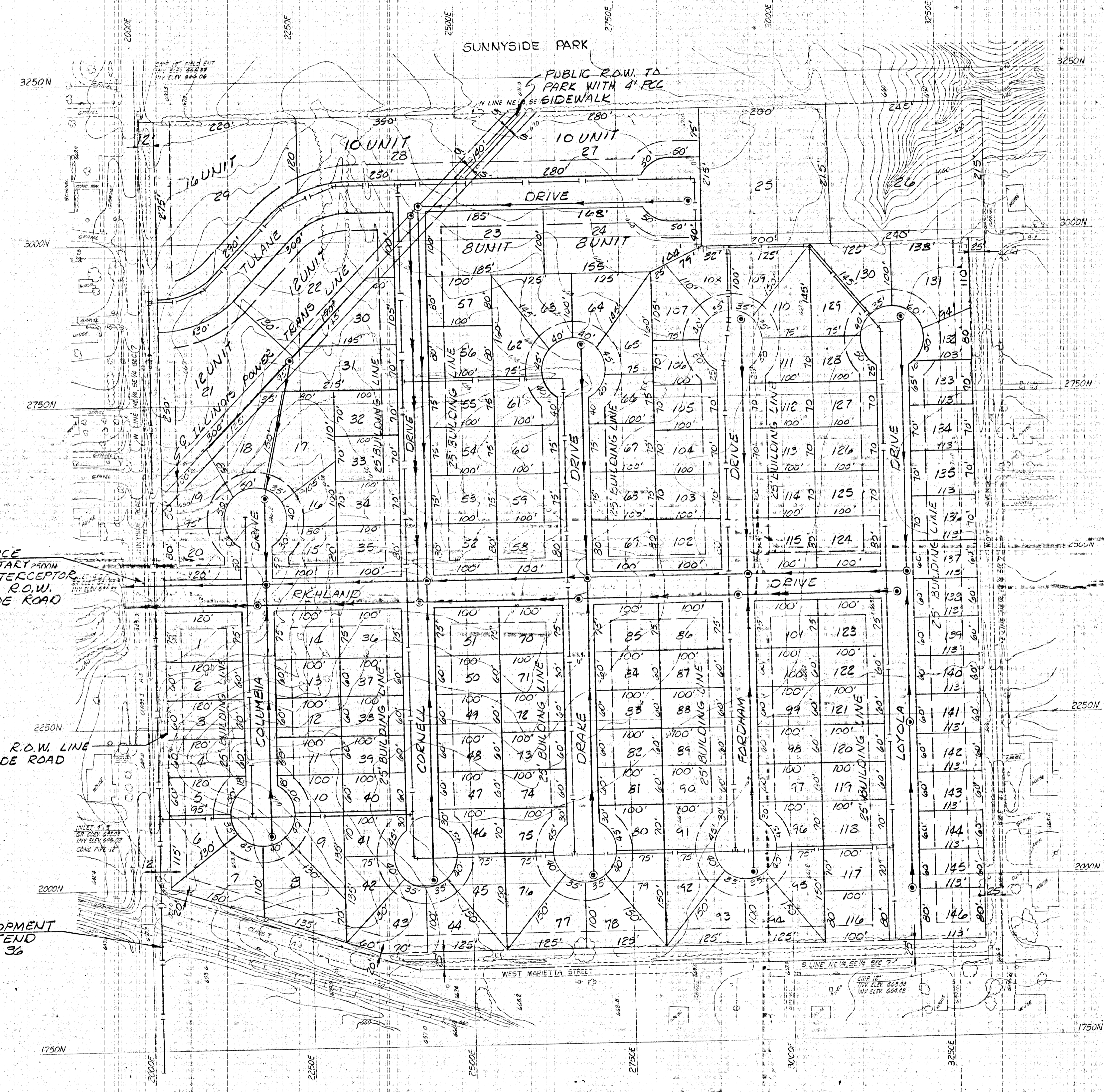
SCALE: 1"=100'

LEGEND  
 - - - - - STORM SEWER  
 - - - - - SANITARY SEWER  
 - - - - - 6" C.I. WATERMAIN

SANITARY SEWER SERVICE  
 FROM EXTENSION OF SANITARY MAIN  
 DISTRICT OF DECATUR INTERCEPTOR  
 SEWER LOCATED ON P.B. ROW,  
 750' WEST OF SUNNYSIDE ROAD

WATER SERVICE FOR DEVELOPMENT  
 FROM 12" MAIN TO BE EXTEND  
 FROM SOUTH U.S. ROUTE 36  
 BY CITY OF DECATUR

EXISTING R.O.W. LINE  
 SUNNYSIDE ROAD



TYPICAL PAVEMENT SECTION  
 (NO SCALE)

NOTES

- SITE DATA
  - Total Area in Tract - 39.54 Acres
  - Area in Single Family Lots - 26.21 Acres
  - Area in Multi-Family Lots - 4.88 Acres
  - Area in Perimeter Streets - 2.03 Acres
  - Area in Interior Streets - 6.42 Acres
  - Number Single Family Lots - 137
  - Number Multi-Family Lots - 7
  - Total Family Units - 213
- Fire Hydrants will be installed in accordance with City of Decatur Standards.
- In Line Water Main Valves will be installed in accordance with City of Decatur Standards.
- Easements for Public Utilities will be granted as required.
- Storm Sewers to be designed in accordance with City of Decatur standards.
- LOTS 21, 22, 23, 24, 27, 28 & 29 ARE MULTI-FAMILY UNITS ALL REMAINING LOTS ARE SINGLE FAMILY DWELLINGS

BUILDING HEIGHTS  
 ON MULTI-FAMILY LOTS  
 3-STORY BLDGS. WILL  
 BE ALLOWED WITH MAX.  
 HEIGHT OF 32 FEET IN  
 LIEU OF THE CURRENT  
 2 1/2 STORY 35 FEET  
 MAX. HEIGHT.

LEGAL DESCRIPTION:  
 THE NORTHEAST QUARTER OF THE SOUTHEAST QUARTER  
 OF SECTION 7, T16N, R2E, OF THE 3RD P.M.,  
 MACON COUNTY, ILLINOIS

FEB 9 1978

| REVISIONS |         | SCALE  | PROJECT | SHEET TITLE                           | PROJECT NO.  |
|-----------|---------|--|---------|---------------------------------------|--------------|
| NO.       | DATE    | DESCRIPTION  |         |                                       |              |
| 1         | 1/15/77 | CHANGED R.O.W. FROM 25' TO 12' & ADDED 13' TO LOTS ON WEST SIDE OF MOFFET AVE. | T.J.E.  | RICHLAND HEIGHTS<br>DECATUR, ILLINOIS | 2<br>OF<br>2 |
| 2         | 1/15/77 | BUILDING LINE ON BOUNDARY  | R.K.    |                                       |              |

shaffer-krimmel-silver  
 ASSOCIATES, INC. CONSULTING ENGINEERS  
 7900 N. Broadway • P.O. Box 2233 • Decatur, Illinois, 62526 • 217/877-2100

AMENDED FEB 9, 1978