

	(ORIGINAL)	REQUICED PARKING
A UNITS 1 BE :	27 (27)	27
B UNITS 2 BE :	55 (55)	55
C UNITS 2 BE :	10 (10)	10
D UNITS 2 BE :	15 (15)	30
TOTAL	107 UNITS (107)	155 CARS
PARKING PROVIDED :		201 CARS (182)

28 UNITS (28)
53 PARKING (54)

250 PLD.
13 PARKING (11)

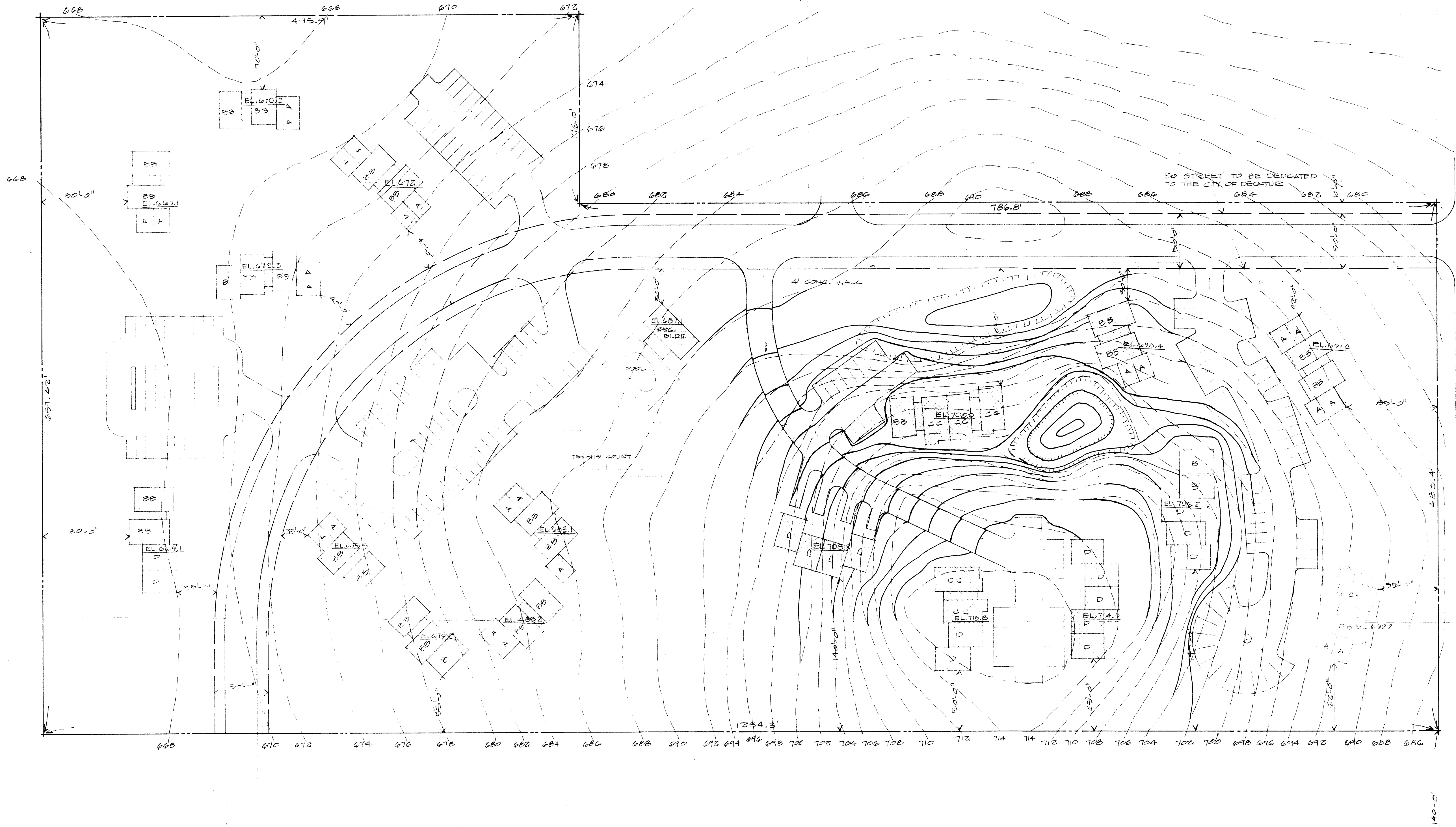
24 UNITS
45 PARKING

33 UNITS (31)
37 PARKING (44)

27 UNITS (27)
47 PARKING (41)

SITE DEVELOPMENT PLAN - (COMPARISON WITH ORIGINAL P.U.D.)
DATE 1-2-83
(ORIGINAL BUILDINGS SHOWN DASHED)

PROJ. NO. 118	DATE: 4 MAY, 71
	DRAWN: MP
SHEET	CHECKED:
	APPROVED:
AD 1 of	REVISIONS
	NO. DATE
	REMARKS
STRAWBERRY HILL DECATUR, ILLINOIS COMPARISON PLAN WITH ORIGINAL P.U.D.	
oms Architectural and Mechanical Systems Corporation Urbana, Illinois 61801 p.o. box 433	
RECEIVED MAY 20 1971	



SITE DEVELOPMENT PLAN BUILDING SETBACK DIMENSIONS
 SCALE 1"=30'

SEE ENCL. 15 DRIVE

PROJ. NO. 113
 DATE: 4 MAY 71
 DRAWN: MP
 CHECKED:
 APPROVED:

oms
 Architectural and Mechanical Systems Corporation
 Urbana, Illinois 61801
 p.o. box 433

STEWARTSBURY HILL
 DECATUR, ILLINOIS
 DIMENSIONED SITE PLAN

NO.	DATE	REVISIONS	REMARKS

SHEET
AD-2
 of